

List of pages in this Trip Kit

Trip Kit Index

Airport Information For DAAG

Terminal Charts For DAAG

Revision Letter For Cycle 07-2023

Change Notices

Notebook

General Information

Location: ALGIERS DZA
ICAO/IATA: DAAG / ALG
Lat/Long: N36° 41.67', E003° 13.02'
Elevation: 82 ft

Airport Use: Public
Daylight Savings: Not Observed
UTC Conversion: -1:00 = UTC
Magnetic Variation: 1.0° E

Fuel Types: 100 Octane (LL), Jet A-1
Customs: Yes
Airport Type: IFR
Landing Fee: Yes
Control Tower: Yes
Jet Start Unit: No
LLWS Alert: No
Beacon: No

Sunrise: 0513 Z
Sunset: 1822 Z

Runway Information

Runway: 05
Length x Width: 11483 ft x 197 ft
Surface Type: concrete
TDZ-Elev: 66 ft
Lighting: Edge, Centerline

Runway: 09
Length x Width: 11483 ft x 148 ft
Surface Type: asphalt
TDZ-Elev: 56 ft
Lighting: Edge, ALS, TDZ

Runway: 23
Length x Width: 11483 ft x 197 ft
Surface Type: concrete
TDZ-Elev: 75 ft
Lighting: Edge, ALS, Centerline, TDZ

Runway: 27

Length x Width: 11483 ft x 148 ft

Surface Type: asphalt

TDZ-Elev: 66 ft

Lighting: Edge

Stopway: 1017 ft

Communication Information

ATIS: 128.525

Algiers Tower: 119.700 Secondary VHF-DF

Algiers Tower: 118.700

Algiers Ground: 121.800

Algiers Approach: 121.400 VHF-DF

Algiers Approach: 120.800 Secondary

DAAG/ALG

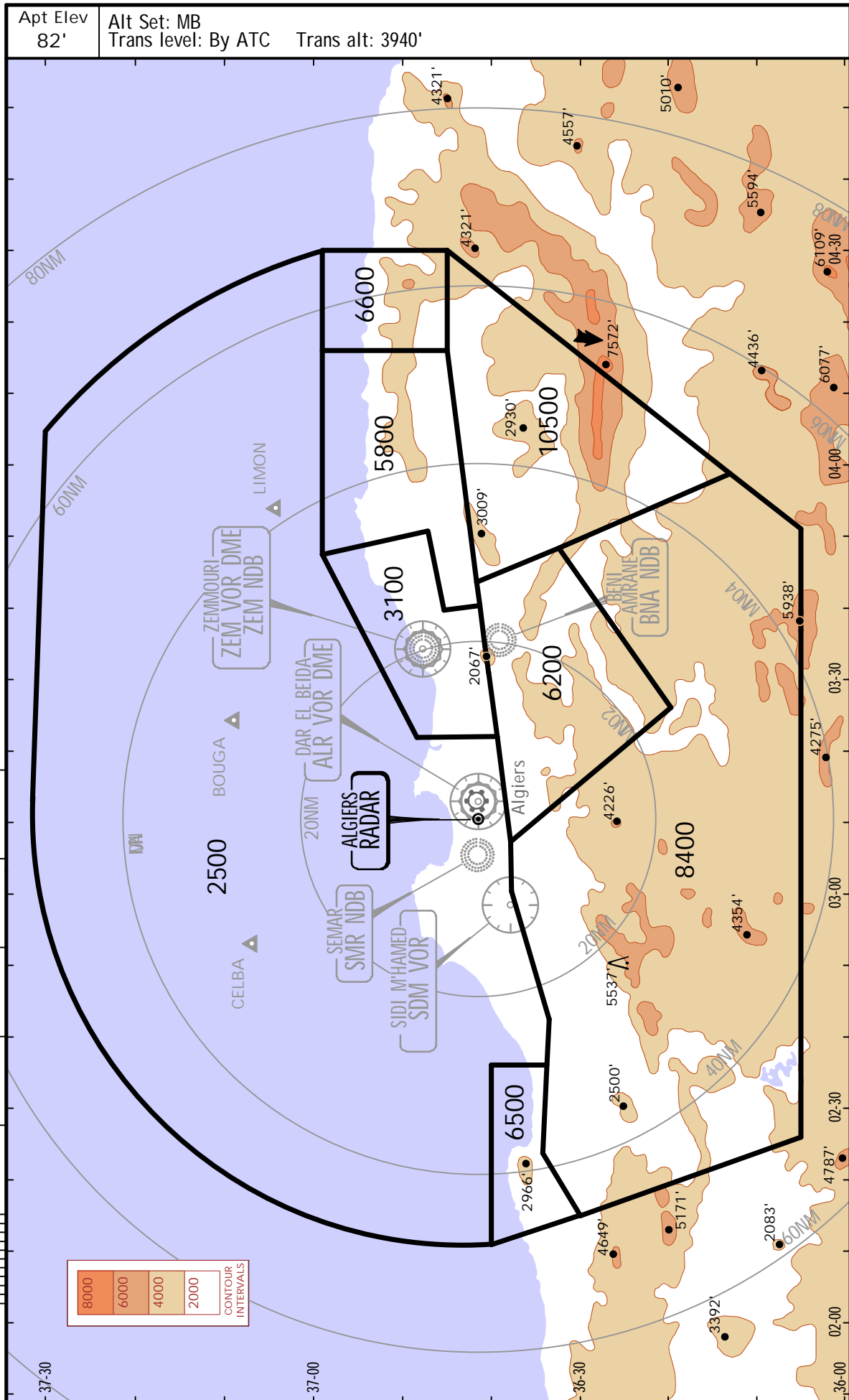


ALGIERS, ALGERIA

HOUARI BOUMEDIENE 6 MAR 09

(10-1R) .Eff.12.Mar.

.RADAR.MINIMUM.ALTITUDES.

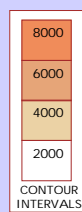
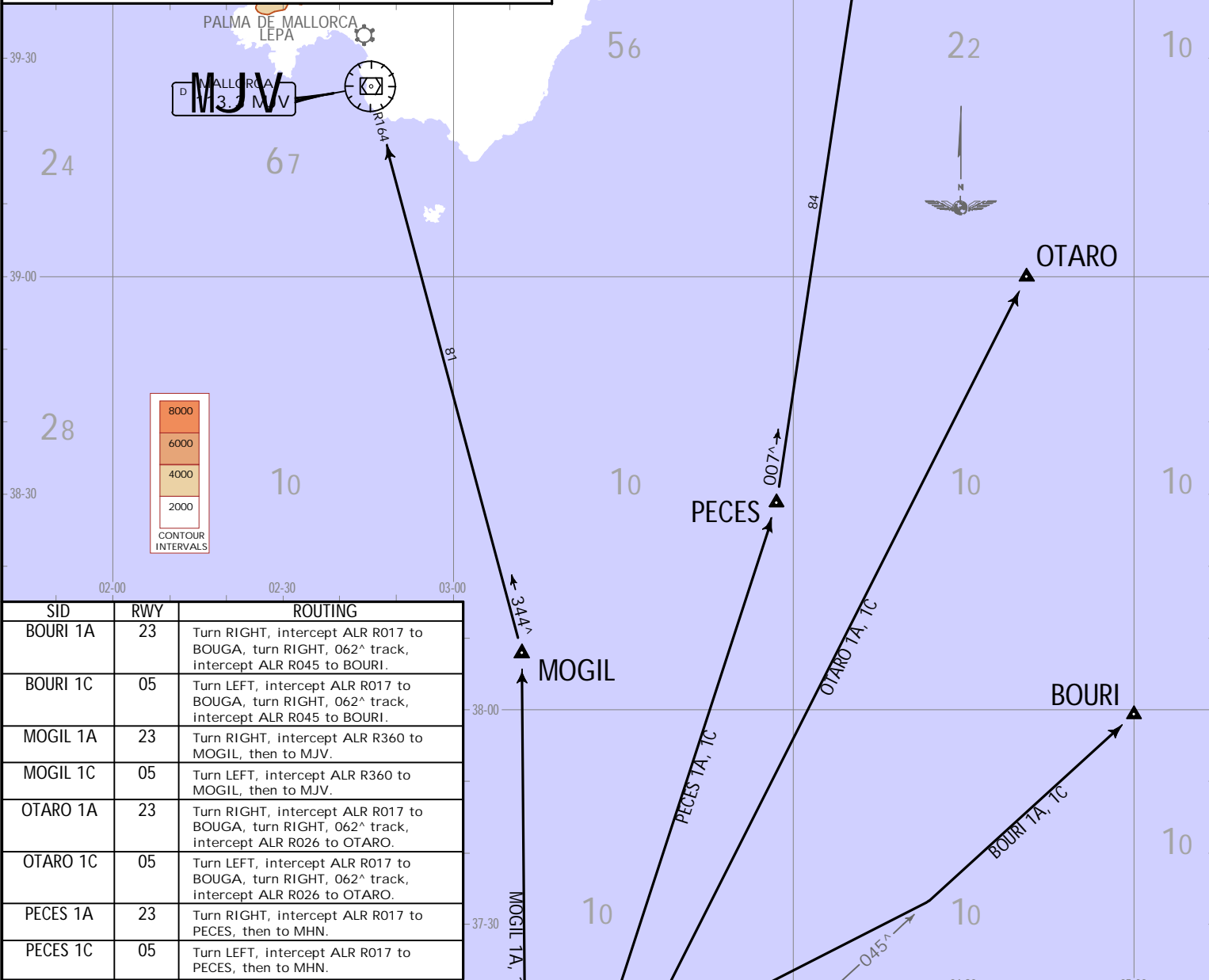


CHANGES: New format: SIDs completely revised.

DAAG/ALG
HOUARI BOUMEDIENE

Apt Elev 82 Trans alt: 3940

**BOURI 1A [BOUR1A], BOURI 1C [BOUR1C]
MOGIL 1A [MOG11A], MOGIL 1C [MOG11C]
OTARO 1A [OTAR1A], OTARO 1C [OTAR1C]
PECES 1A [PECE1A], PECES 1C [PECE1C]
DEPARTURES**

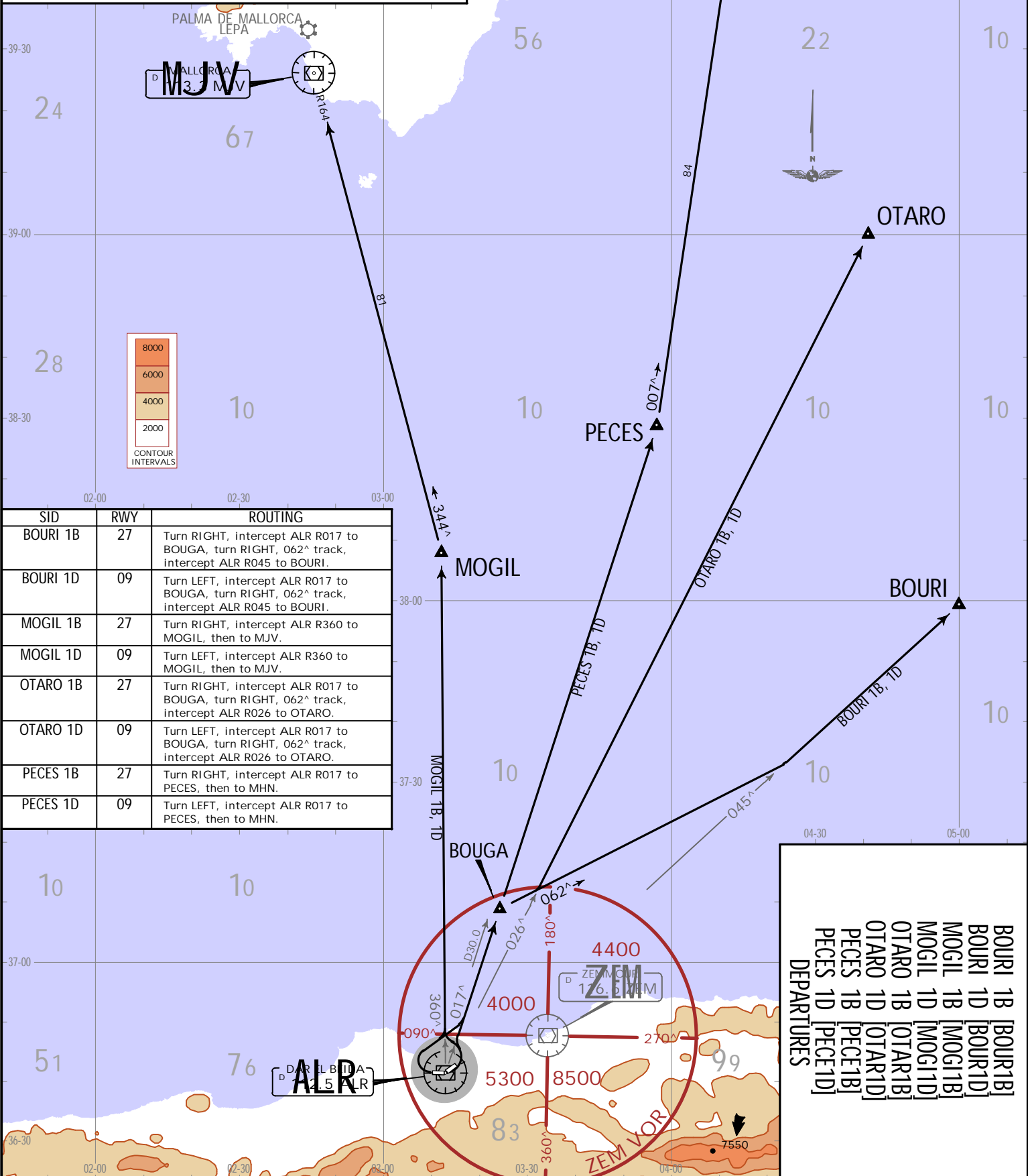


**BOURI 1A [BOUR1A]
BOURI 1C [BOUR1C]
MOGIL 1A [MOG11A]
MOGIL 1C [MOG11C]
OTARO 1A [OTAR1A]
OTARO 1C [OTAR1C]
PECES 1A [PECE1A]
PECES 1C [PECE1C]
DEPARTURES**

CHANGES: New format: SIDs completely revised.

Apt Elev 82 Trans alt: 3940

**BOURI 1B [BOUR1B], BOURI 1D [BOUR1D]
 MOGIL 1B [MOGI1B], MOGIL 1D [MOGI1D]
 OTARO 1B [OTAR1B], OTARO 1D [OTAR1D]
 PECES 1B [PECE1B], PECES 1D [PECE1D]
 DEPARTURES**



DAAG/ALG
 HOUARI BOUMEDIENE

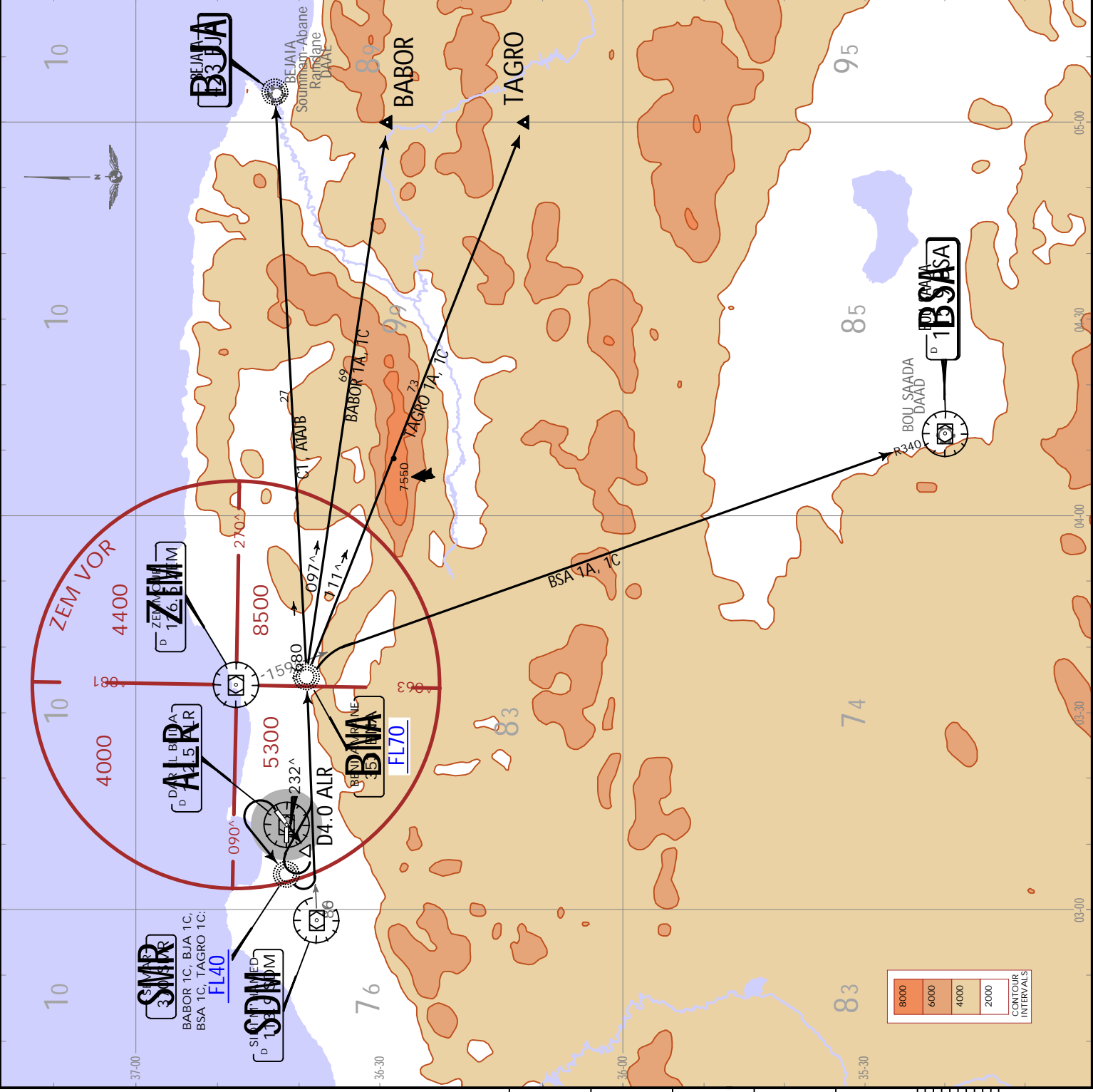
22 FEB 19
 10-3A Eff: 28 Feb.

JEPPESSEN
 ALGIERS, ALGERIA
 SID

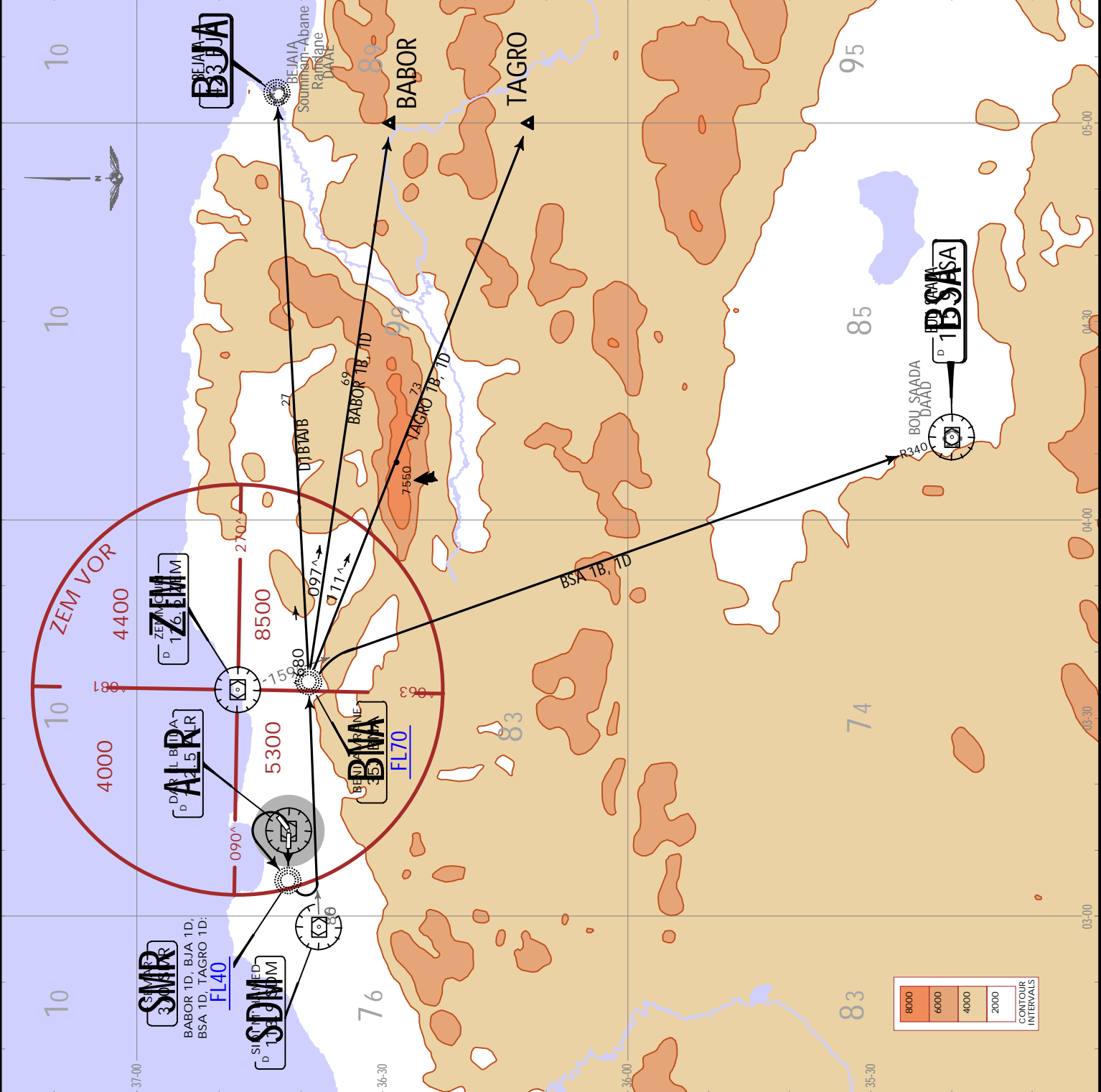
JEPPESSEN, 2019. ALL RIGHTS RESERVED.

Apt Elev 82	Trans alt: 3940
BABOR 1A [BAB01A] BABOR 1C [BAB01C] BJA 1A [BJA1A] BJA 1C [BJA1C] BSA 1A [BSA1A] BSA 1C [BSA1C] TAGRO 1A [TAGR1A] TAGRO 1C [TAGR1C] DEPARTURES	

SID	RWY	ROUTING
BABOR 1A	23	To ALR VOR, ALR R232 to D4.0 ALR, turn RIGHT, intercept SDM R086 to BNA, then to BABOR.
BABOR 1C	05	Turn LEFT to SMR, turn LEFT intercept SDM R086 to BNA, then to BABOR.
BJA 1A	23	To ALR VOR, ALR R232 to D4.0 ALR, turn RIGHT, intercept SDM R086 to BNA, then to BJA.
BJA 1C	05	Turn LEFT to SMR, turn LEFT, intercept SDM R086 to BNA, then to BJA.
BSA 1A	23	To ALR, ALR R232 to D4.0 ALR, turn RIGHT, intercept SDM R086 to BNA, then to BSA.
BSA 1C	05	Turn LEFT to SMR, turn LEFT, intercept SDM R086 to BNA, then to BSA.
TAGRO 1A	23	To ALR, ALR R232 to D4.0 ALR, turn RIGHT, intercept SDM R086 to BNA, then to TAGRO.
TAGRO 1C	05	Turn LEFT to SMR, turn LEFT, intercept SDM R086 to BNA, then to TAGRO.

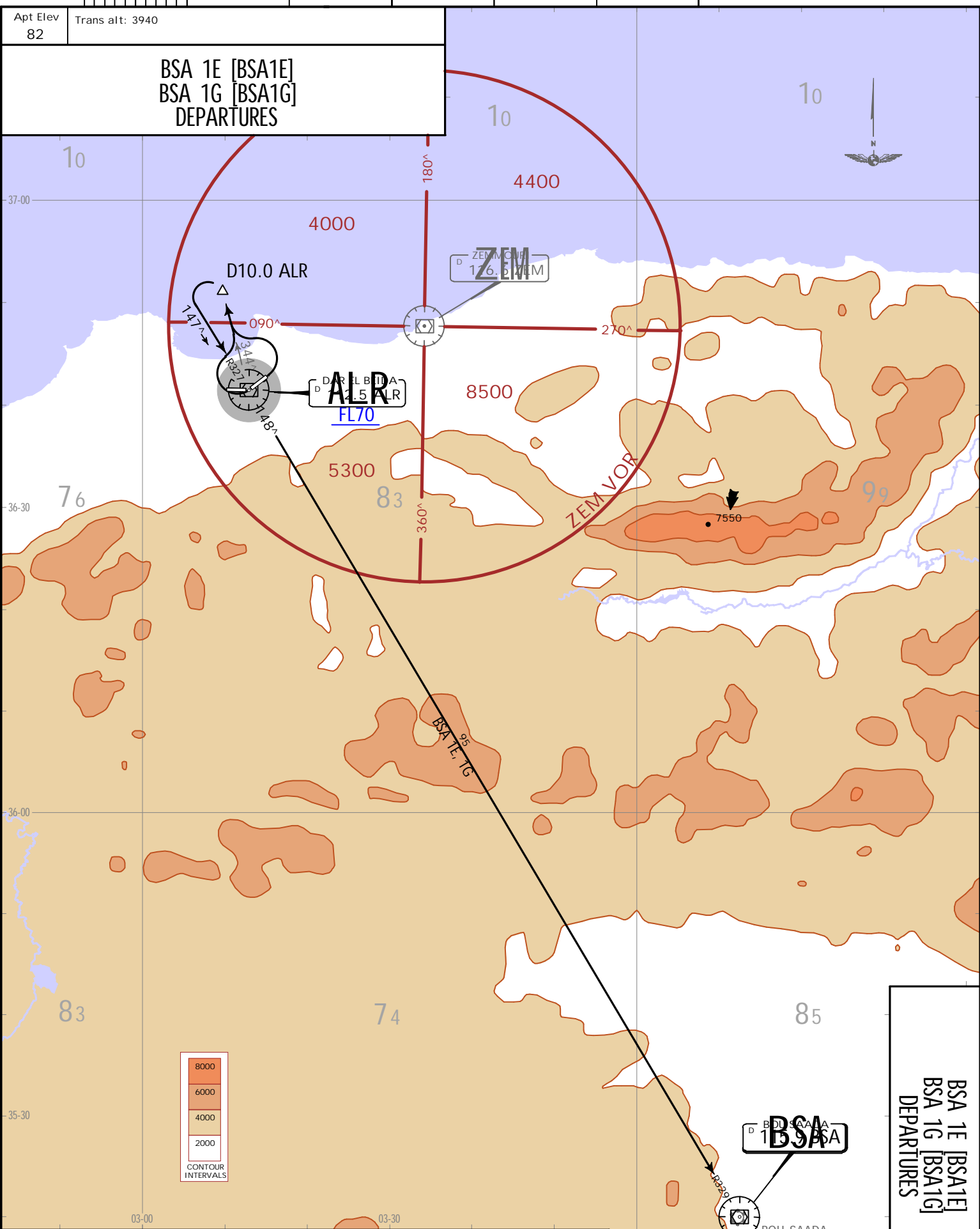


SID	RWY	ROUTING
BABOR 1B	27	To SMR, turn LEFT, intercept SDM R086 to BNA, then to BABOR.
BABOR 1D	09	Turn LEFT to SMR, turn LEFT, intercept SDM R086 to BNA, then to BABOR.
BJA 1B	27	To SMR, turn LEFT, intercept SDM R086 to BNA, then to BJA.
BJA 1D	09	Turn LEFT to SMR, turn LEFT, intercept SDM R086 to BNA, then to BJA.
BSA 1B	27	To SMR, turn LEFT, intercept SDM R086 to BNA, then to BSA.
BSA 1D	09	Turn LEFT to SMR, turn LEFT, intercept SDM R086 to BNA, then to BSA.
TAGRO 1B	27	To SMR, turn LEFT, intercept SDM R086 to BNA, then to TAGRO.
TAGRO 1D	09	Turn LEFT to SMR, turn LEFT, intercept SDM R086 to BNA, then to TAGRO.



DAAG/ALG
HOUARI BOUMEDIENE

CHANGES: New chart; SIDs transferred & completely revised



Apt Elev 82
Trans alt: 3940

**BSA 1E [BSA1E]
BSA 1G [BSA1G]
DEPARTURES**

SID	RWY	ROUTING
BSA 1E	23	Turn RIGHT, intercept ALR R344 to D10.0 ALR, turn LEFT, intercept ALR R327 inbound to ALR, ALR R148 to BSA.
BSA 1G	05	Turn LEFT, intercept ALR R344 to D10.0 ALR, turn LEFT, intercept ALR R327 inbound to ALR, ALR R148 to BSA.

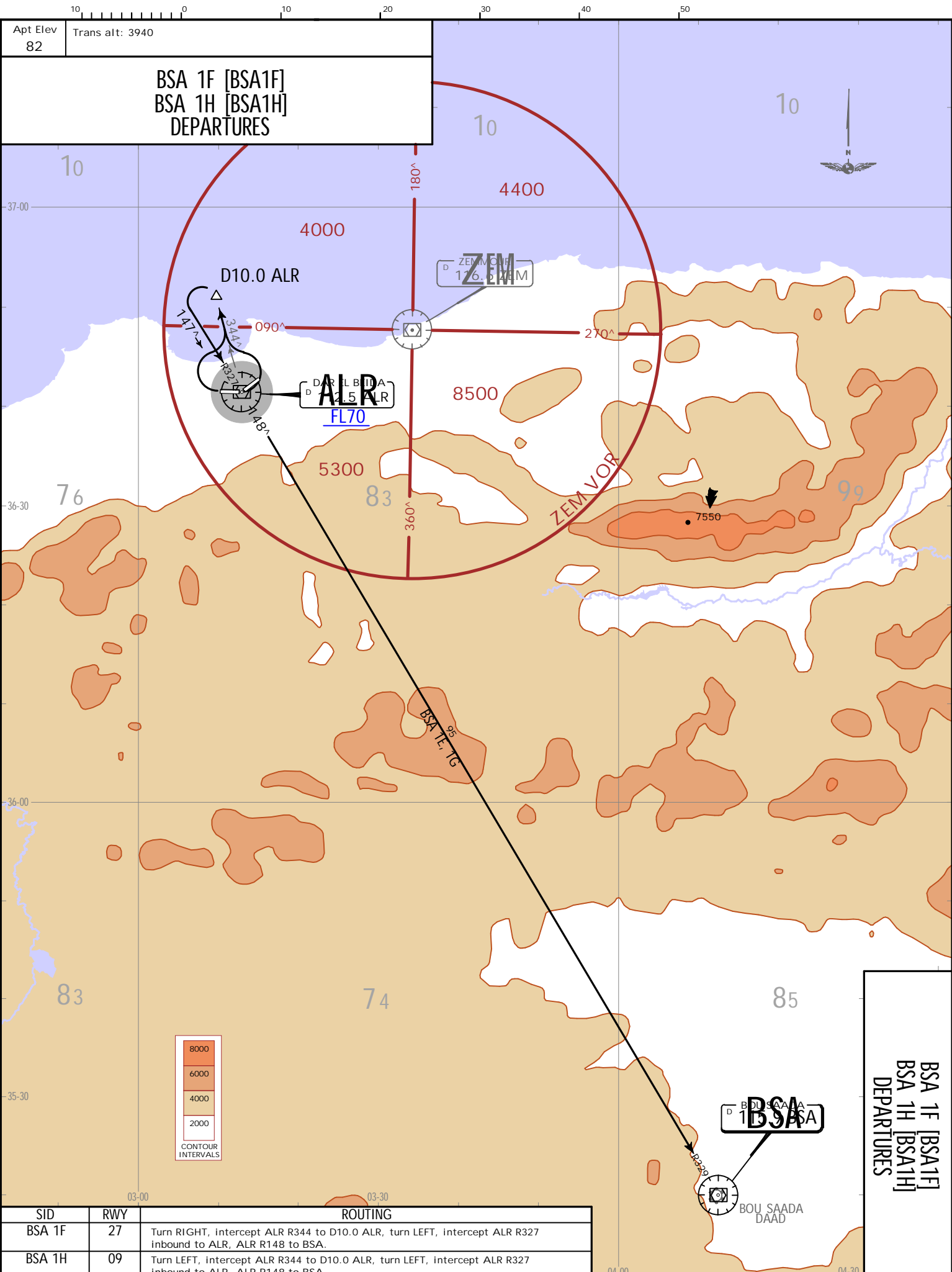
BSA
BOU SAADA DAAD

**BSA 1E [BSA1E]
BSA 1G [BSA1G]
DEPARTURES**

JEPPESSEN ALGIERS, ALGERIA
SID
22 FEB 19 (10-3D) EFF: 28 FEB

JEPPESSEN, 2019. ALL RIGHTS RESERVED.

CHANGES: New chart: SIDs transferred & completely revised



Apt Elev 82
Trans alt: 3940

**BSA 1F [BSA1F]
BSA 1H [BSA1H]
DEPARTURES**

SID	RWY	ROUTING
BSA 1F	27	Turn RIGHT, intercept ALR R344 to D10.0 ALR, turn LEFT, intercept ALR R327 inbound to ALR, ALR R148 to BSA.
BSA 1H	09	Turn LEFT, intercept ALR R344 to D10.0 ALR, turn LEFT, intercept ALR R327 inbound to ALR, ALR R148 to BSA.

**BSA 1F [BSA1F]
BSA 1H [BSA1H]
DEPARTURES**

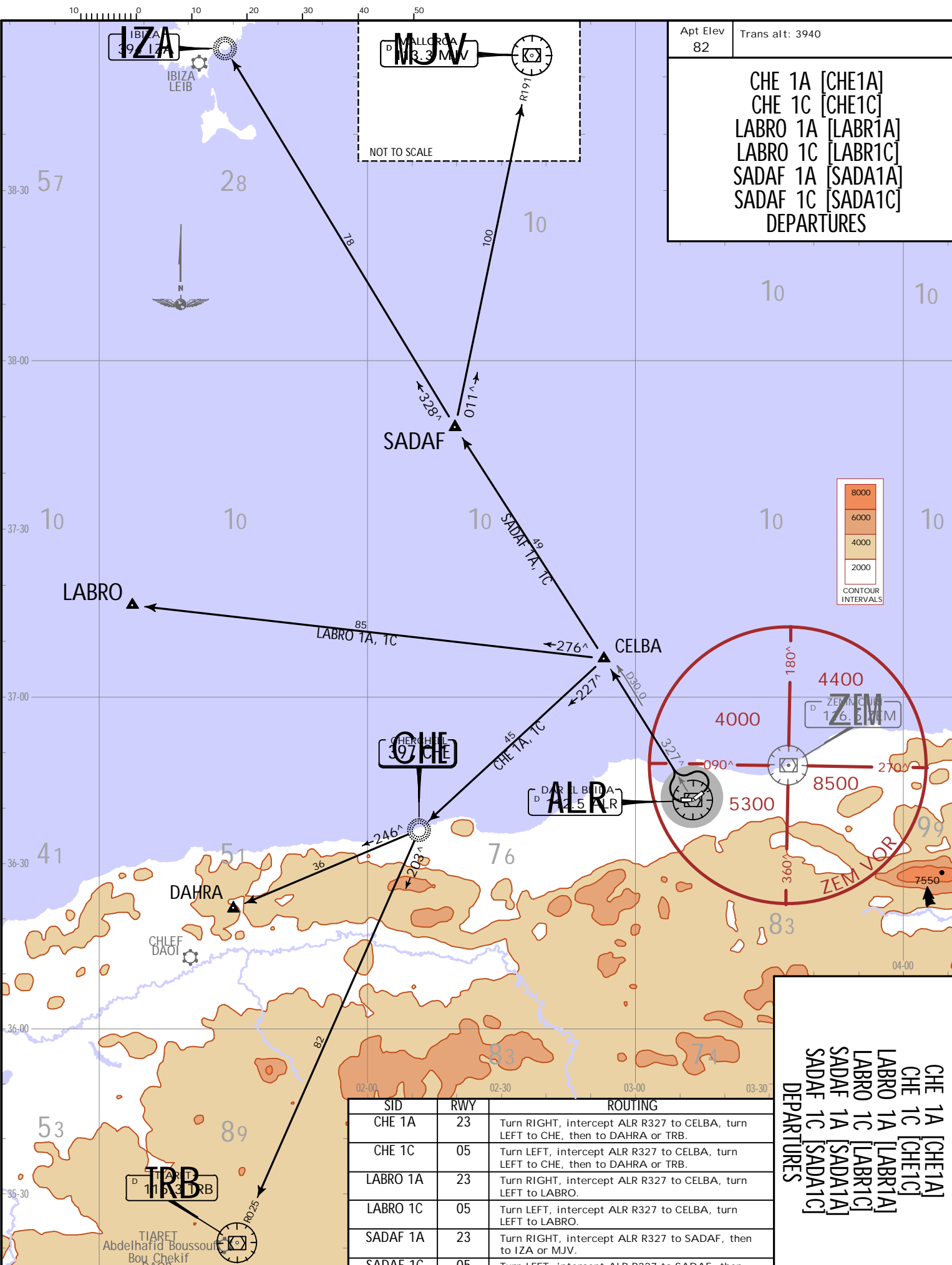
DAAG/ALG
HOUARI BOUMEDIENE

JEPPESSEN
22 FEB 19 (10-3E) Eff: 28 Feb.

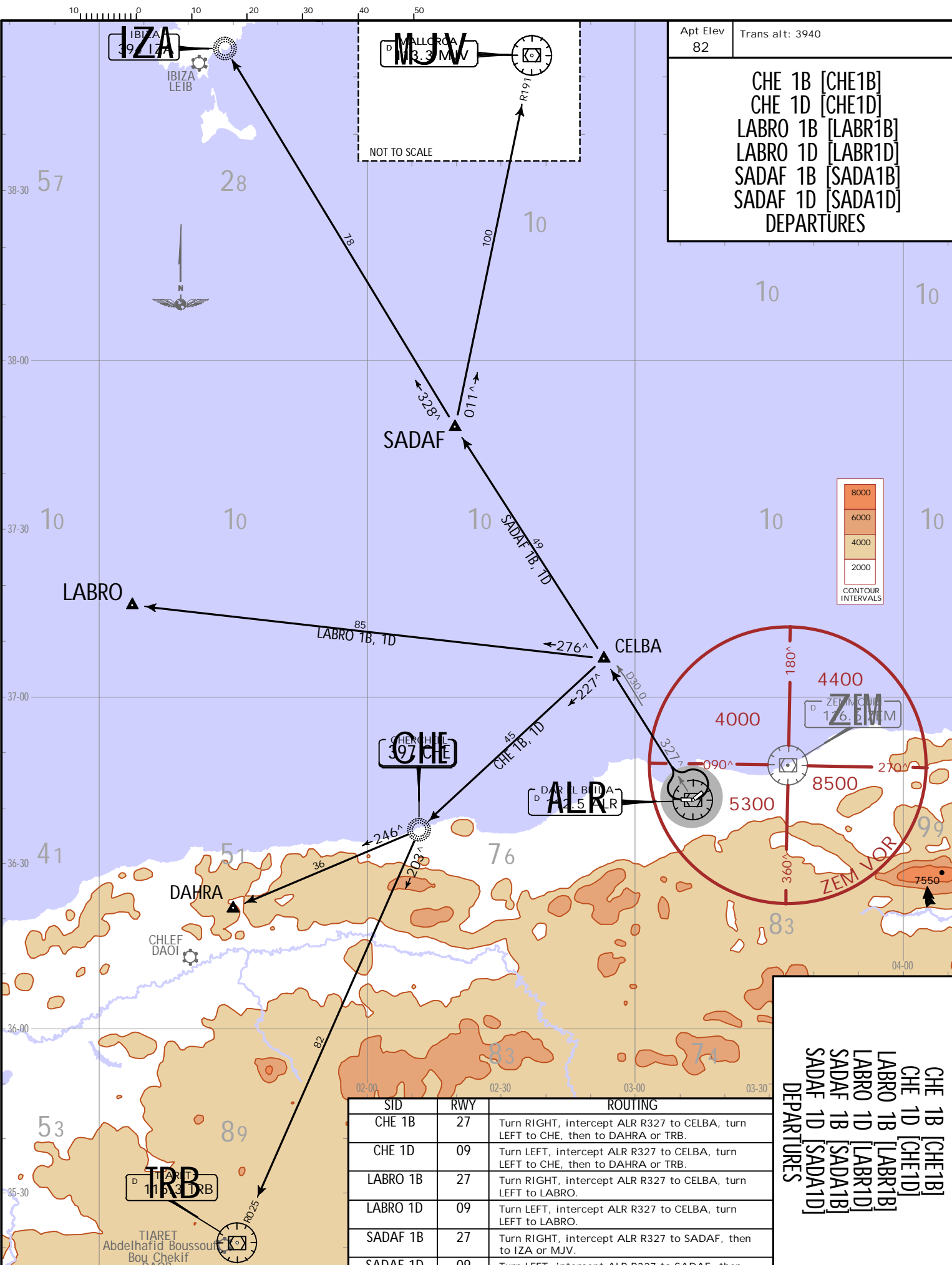
ALGIERS, ALGERIA
SID.

CHANGES: New chart; SIDs transferred & completely revised
 JEPPesen 2019. ALL RIGHTS RESERVED.

DAAG/ALG
 HOUARI BOUMEDIENE
 JEPPESEN ALGIERS, ALGERIA
 22 FEB 19 10-3E EFF:28.Feb.
 SID



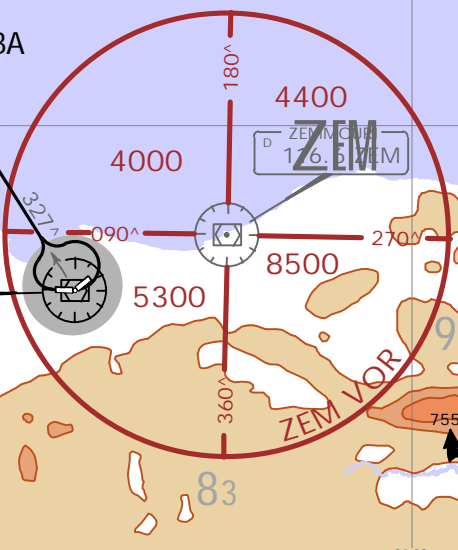
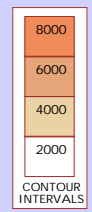
CHANGES: New chart: SIDs transferred & completely revised



Apt Elev 82 Trans alt: 3940

DEPARTURES

- CHE 1B [CHE1B]
- CHE 1D [CHE1D]
- LABRO 1B [LABR1B]
- LABRO 1D [LABR1D]
- SADF 1B [SADA1B]
- SADF 1D [SADA1D]



DAAG/ALG
 HOUARI BOUMEDIENE
 22 FEB 19 (10-3G) Eff: 28 Feb
JEPPESSEN
ALGIERS, ALGERIA
 SID

DAAG/ALG

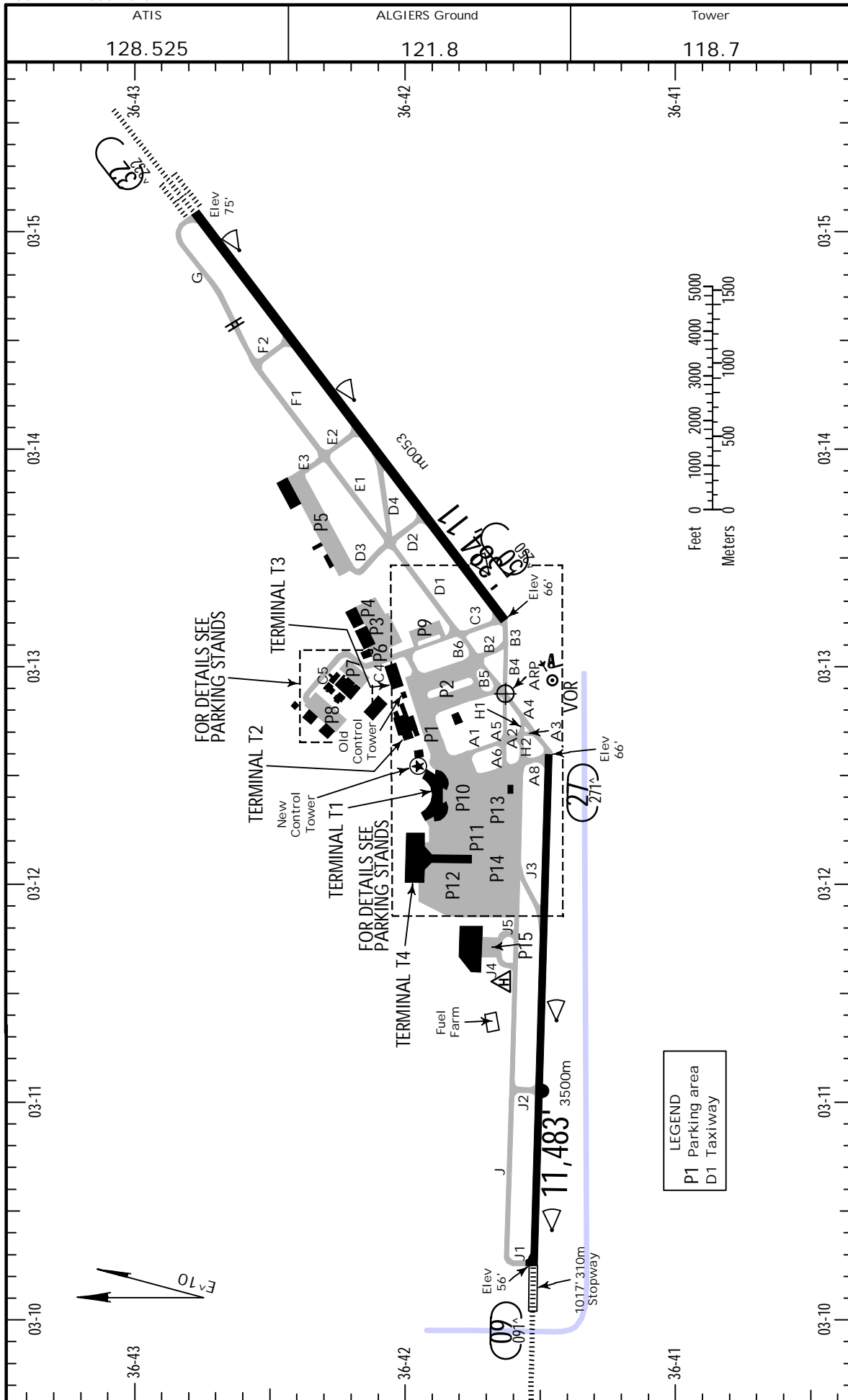
Apt Elev 82
N36 41.7 E003 13.0

JEPPesen

9 DEC 22 (10-9)

ALGIERS, ALGERIA

HOUARI BOUMEDIENE



FOR DETAILS SEE PARKING STANDS

FOR DETAILS SEE PARKING STANDS

LEGEND
 P1 Parking area
 D1 Taxiway

DAAG/ALG



ALGIERS, ALGERIA

9 DEC 22 (10-9A)

HOUARI BOUMEDIENE

GENERAL
 Birds.
 Rwy 23 approved for CAT II/III operations, special aircrew and acft certification required.
 In VMC both runways may be used simultaneously (landing rwy 09 with take-off rwy 05 & landing rwy 23 with take-off rwy 27).
 Rwy 23 & 27 right-hand circuit.

RWY	ADDITIONAL RUNWAY INFORMATION				USABLE LENGTHS		TAKE-OFF	WIDTH
	LANDING		BEYOND		Threshold	Glide Slope		
05	HIRL (60m)	CL (15m)	PAPI-L (3.29^)	RVR				197'
23	HIRL (60m)	CL (15m)	HIALS-II TDZ 1	HST-D4 RVR		10,358' 3157m		60m

1 PAPI-L (3.03^)

09	HIRL (60m)	HIALS TDZ	PAPI-L (3.03^)	HST-J3 RVR		10,499' 3200m		148'
27	HIRL (60m)	PAPI-L (3.00^)		RVR		10,512' 3204m		45m

TAKE-OFF	
AIR CARRIER (JAA)	
Rwy 05/23 LVP must be in force RL, CL & TDZ, MID, Rollout RVR req	All Rwys RL and CL or RL and RCLM
A	500m
B	
C	
D	
	175m
	200m

CHANGES: PAPI angle.

DAAG/ALG

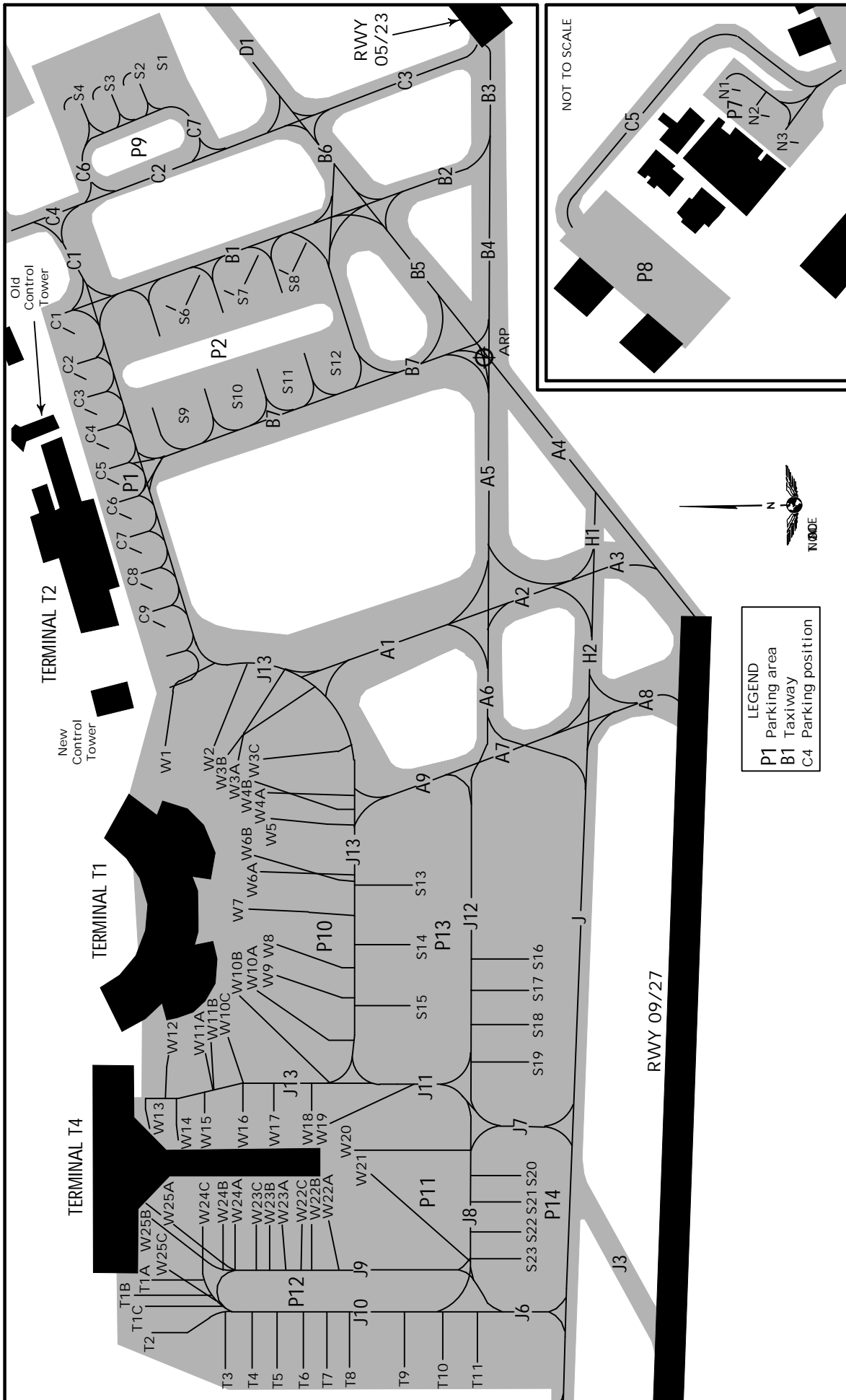


ALGIERS, ALGERIA

HOUARI BOUMEDIENE

24 MAR 23

10-9B



DAAG/ALG



ALGIERS, ALGERIA

24 MAR 23 (10-9C)

HOUARI BOUMEDIENE

INS COORDINATES			
STAND No.	COORDINATES	STAND No.	COORDINATES
C1, C2	N36 42.0 E003 12.9	S20, S21	N36 41.6 E003 12.1
C3	N36 41.9 E003 12.9	S22, S23	N36 41.6 E003 12.0
C4, C5	N36 41.9 E003 12.8	T1A thru T1C	N36 41.9 E003 12.0
C6 thru C8	N36 41.9 E003 12.7	T2, T3	N36 41.9 E003 11.9
C9	N36 41.9 E003 12.6	T4 thru T7	N36 41.8 E003 11.9
N1, N2	N36 42.2 E003 13.0	T8 thru T11	N36 41.7 E003 11.9
N3	N36 42.2 E003 12.9	W1	N36 41.9 E003 12.6
S1, S2	N36 41.9 E003 13.2	W2	N36 41.9 E003 12.5
S3	N36 41.9 E003 13.1	W3A thru W5	N36 41.8 E003 12.5
S4	N36 42.0 E003 13.1	W6A thru W8	N36 41.8 E003 12.4
S6	N36 41.9 E003 13.0	W9 thru W10C	N36 41.8 E003 12.3
S7	N36 41.8 E003 13.0	W11A thru W12	N36 41.9 E003 12.3
S8	N36 41.8 E003 13.0	W13 thru W15	N36 41.9 E003 12.2
S9	N36 41.9 E003 12.8	W16 thru W19	N36 41.8 E003 12.2
S10 thru S12	N36 41.8 E003 12.9	W20, W21	N36 41.7 E003 12.1
S13, S14	N36 41.7 E003 12.4	W22A thru W24A	N36 41.8 E003 12.1
S15	N36 41.7 E003 12.3	W24B thru W25B	N36 41.9 E003 12.1
S16 thru S18	N36 41.6 E003 12.3	W25C	N36 41.9 E003 12.0
S19	N36 41.6 E003 12.2		

DAAG/ALG



Standard
ALGIERS, ALGERIA
HOUARI BOUMEDIENE

STRAIGHT-IN RWY		A	B	C	D
05	1 VOR	530' (464') R1500m	530' (464') R1500m	530' (464') R2200m	530' (464') R2200m
09	ILS	256' (200')	266' (210')	276' (220')	286' (230')
	FULL	R550m 2 V800m	R550m 2 V800m	R550m 2 V800m	R550m 2 V800m
	ALS out	R1200m	R1200m	R1200m	R1200m
	1 LOC	560' (504') 2300m	560' (504') 2300m	560' (504') 2400m	560' (504') 2400m
	1 VOR	560' (504') 2300m	560' (504') 2300m	560' (504') 2400m	560' (504') 2400m
23	ILS	275' (200')	285' (210')	295' (220')	305' (230')
	FULL	R550m	R550m	R550m	R550m
	TDZ or CL out	R550m 2	R550m 2	R550m 2	R550m 2
	ALS out	R1200m	R1200m	R1200m	R1200m
	1 LOC	460' (385') R1100m	460' (385') R1100m	460' (385') R1100m	460' (385') R1100m
	ALS out	R1500m	R1500m	R1800m	R1800m
	1 VOR	490' (408') R1200m	490' (408') R1200m	490' (408') R1200m	490' (408') R1200m
	ALS out	R1500m	R1500m	R1900m	R1900m
27	ILS	266' (200') R1200m	276' (210') R1200m	286' (220') R1200m	296' (230') R1200m
	1 LOC	570' (504') 2300m	570' (504') 2300m	570' (504') 2400m	570' (504') 2400m
	1 VOR	520' (454') 2400m	520' (454') 2400m	520' (454') 2800m	520' (454') 3200m

1 Continuous Descent Final Approach.

2 RVR 750m when a Flight Director or Autopilot or HUD to DA is not used.

DAAG/ALG



Standard
ALGIERS, ALGERIA
HOUARI BOUMEDIENE

CIRCLE-TO-LAND 1	100 KT	135 KT	180 KT	205 KT
	650' (568') V2500m	720' (638') V2900m	1370' (1288') V5000m	1370' (1288') V5000m
after ILS, LOC, VOR Rwy 23 and VOR Rwy 05	680' (598') V2700m	780' (698') V3200m	1440' (1358') V5000m	1960' (1878') V5000m

1 Not authorized South of airport.

TAKE-OFF RWY 05, 23

	LVP must be in force RL, CL & TDZ, MID, Rollout RVR req	RL and CL or RCLM (DAY only)
A	175m	500m
B		
C	200m	
D		

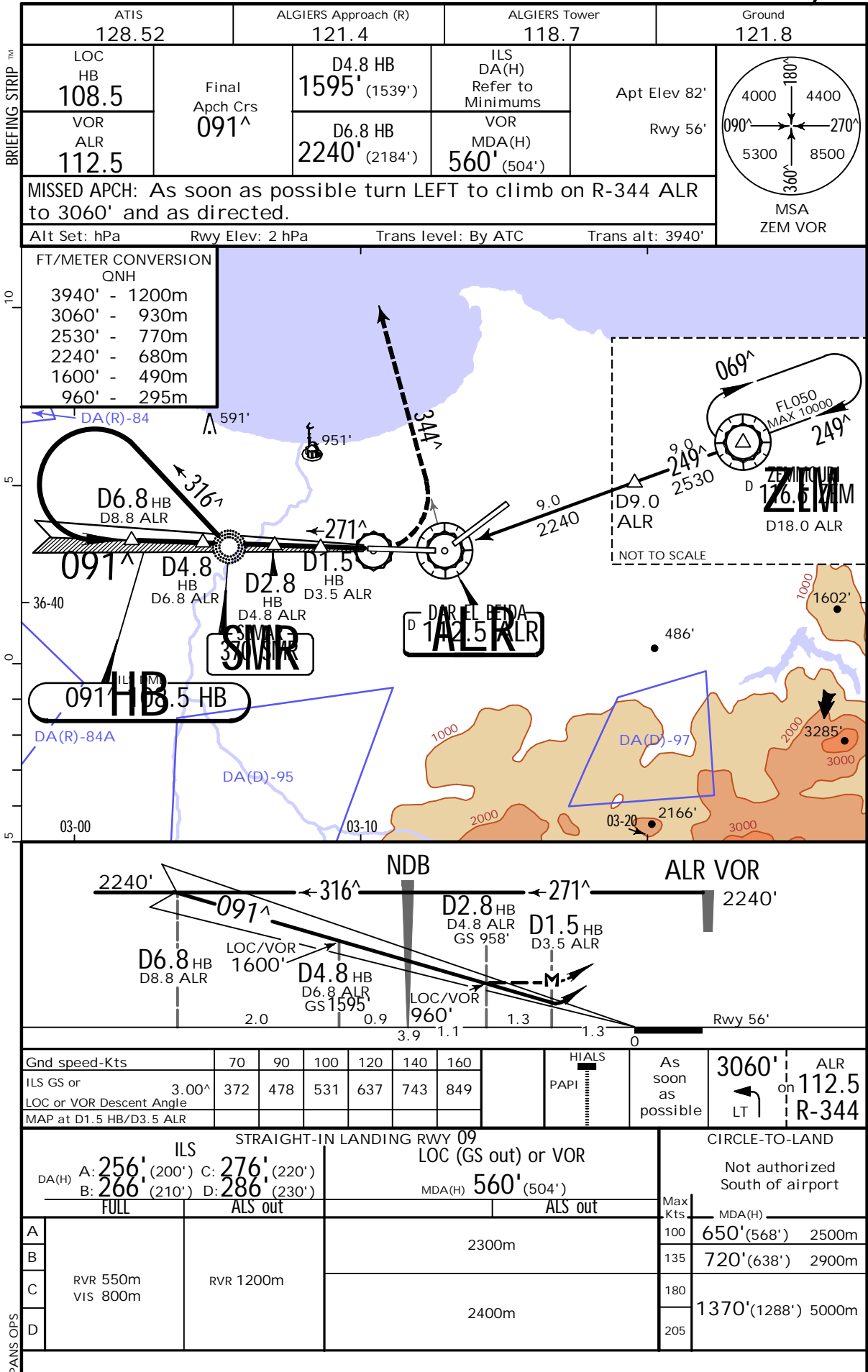
TAKE-OFF RWY 09, 27

	RL and CL or RCLM (DAY only)
A	500m
B	
C	
D	

DAAG/ALG
HOUARI BOUMEDIENE

JEPPESEN
24 FEB 23 (11-1)

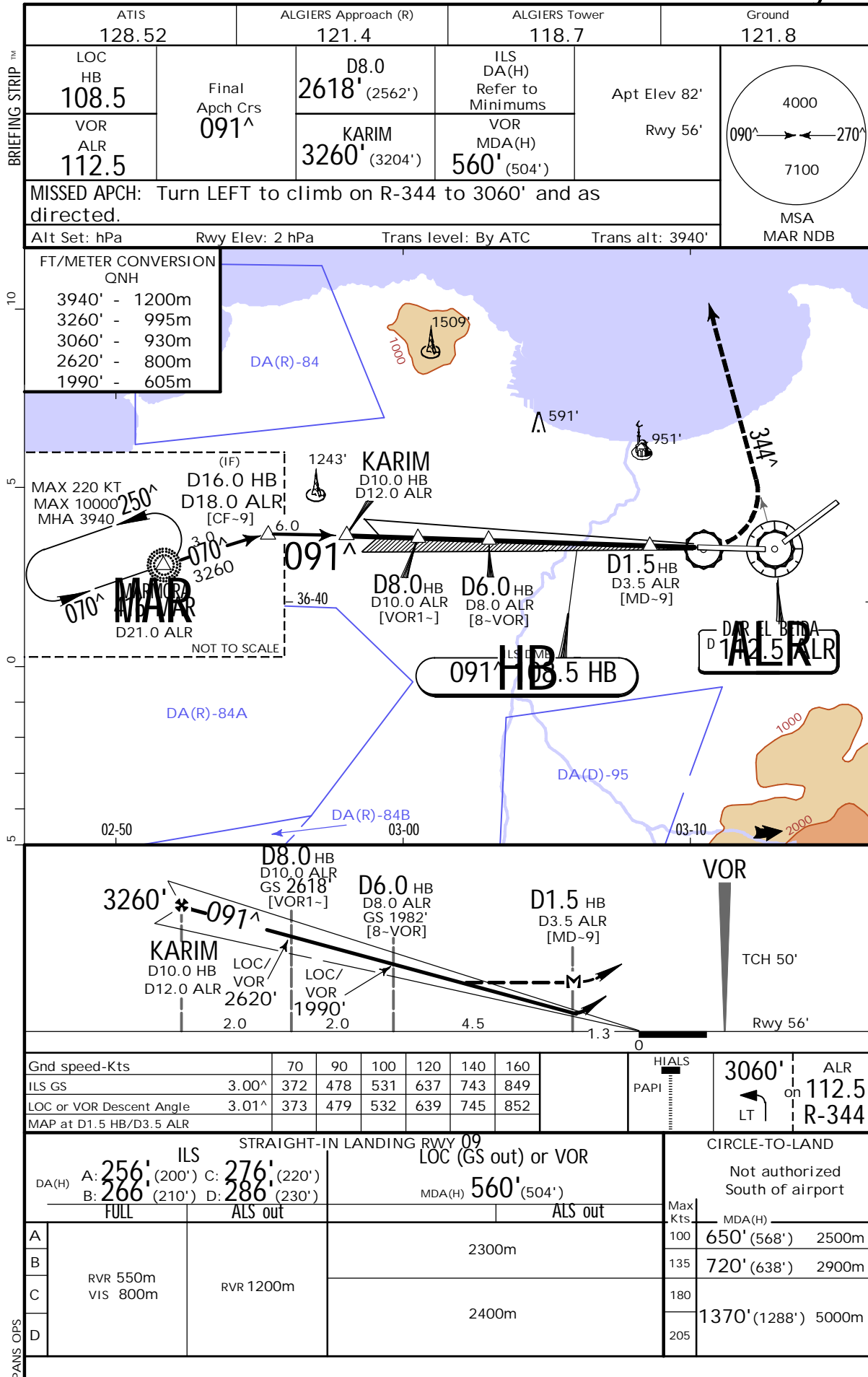
ALGIERS, ALGERIA
VOR DME ILS or
VOR DME Rwy 09



DAAG/ALG
HOUARI BOUMEDIENE

JEPPESEN
24 FEB 23 (11-2)

ALGIERS, ALGERIA
NDB VOR DME ILS or
NDB VOR DME Rwy 09



DAAG/ALG
HOUARI BOUMEDIENE

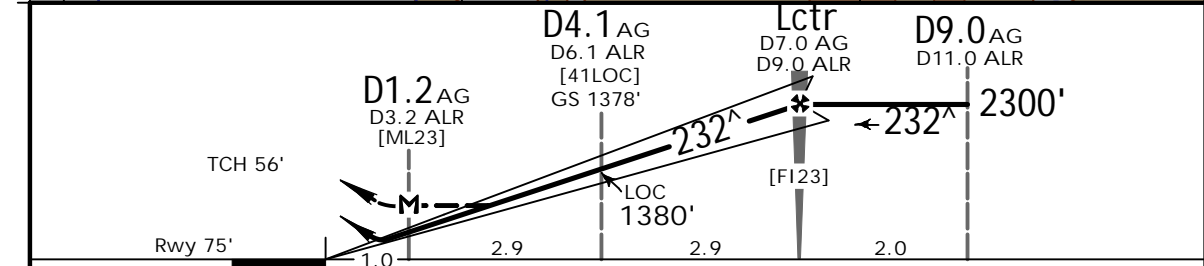
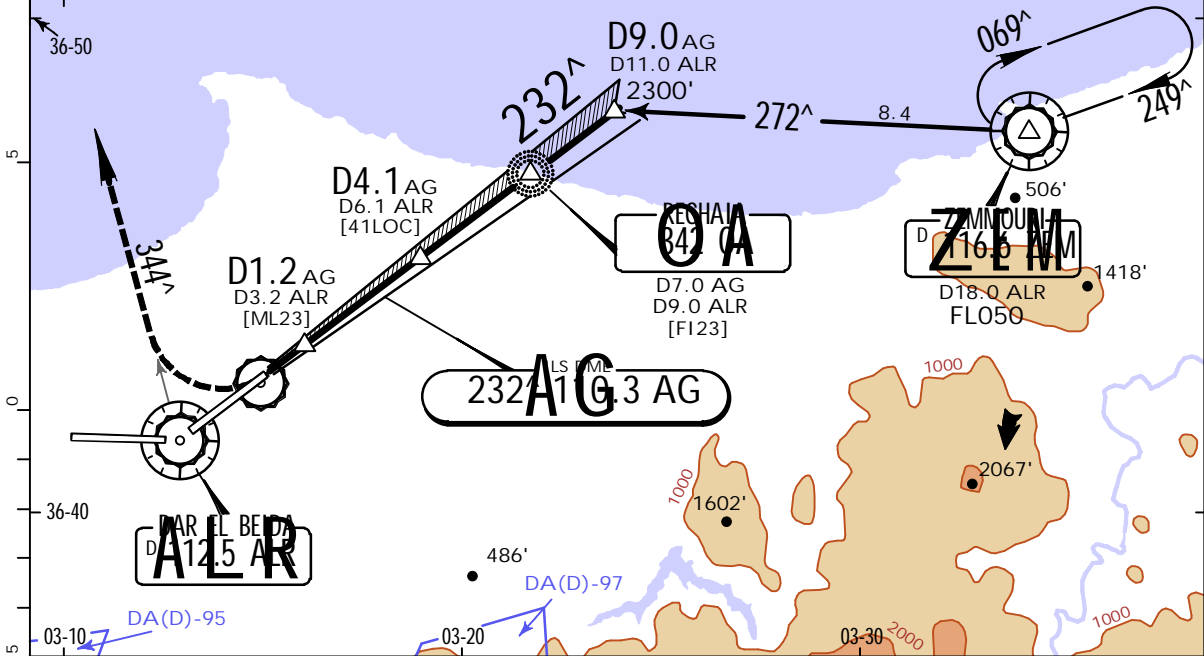
JEPPESEN
9 DEC 22 **(11-3)**

ALGIERS, ALGERIA
ILS or LOC Rwy 23

ATIS 128.525		ALGIERS Approach (R) 121.4		ALGIERS Tower 118.7		Ground 121.8	
LOC AG 110.3	Final Apch Crs 232[^]	Lctr 2300' (2225')		ILS DA(H) Refer to Minimums	Apt Elev 82' Rwy 75'		
MISSED APCH: Climb STRAIGHT AHEAD to 660', then turn RIGHT to climb and follow R-344 ALR, maintain 2470' and as directed.							MSA ZEM VOR
Alt Set: hPa		Rwy Elev: 3 hPa		Trans level: By ATC		Trans alt: 3940'	

FT/METER CONVERSION QNH

3940'	1200m
2470'	750m
2300'	700m
1380'	420m
660'	200m



Gnd speed-Kts	70	90	100	120	140	160	HIALS-II PAPI PAPI	660' ↑ 2470' onto 112.5 RT R-344	
ILS GS or LOC Descent Angle	3.00 [^]	372	478	531	637	743			849
MAP at D1.2 AG/D3.2 ALR									

STRAIGHT-IN LANDING RWY 23 ILS DA(H) A: 275' (200') C: 295' (220') B: 285' (210') D: 305' (230')				LOC (GS out) MDA(H) 460' (385')		CIRCLE-TO-LAND Not authorized South of airport	
FULL		TDZ or CL out		ALS out		ALS out	
A						Max Kts	MDA(H)
B	RVR 550m VIS 800m	RVR 720m VIS 800m	1200m	1000m	RVR 1500m VIS 1600m	100	680' (598') 2700m
C						135	780' (698') 3200m
D				1200m	2000m	180	1440' (1358') 5000m
						205	1960' (1878') 5000m

DAAG/ALG
HOUARI BOUMEDIENE

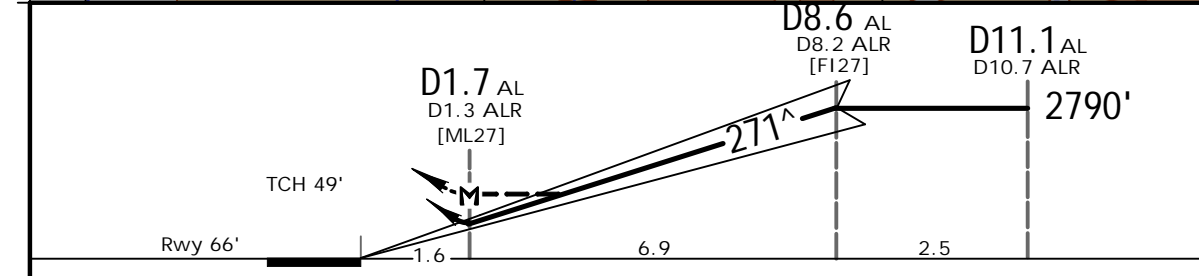
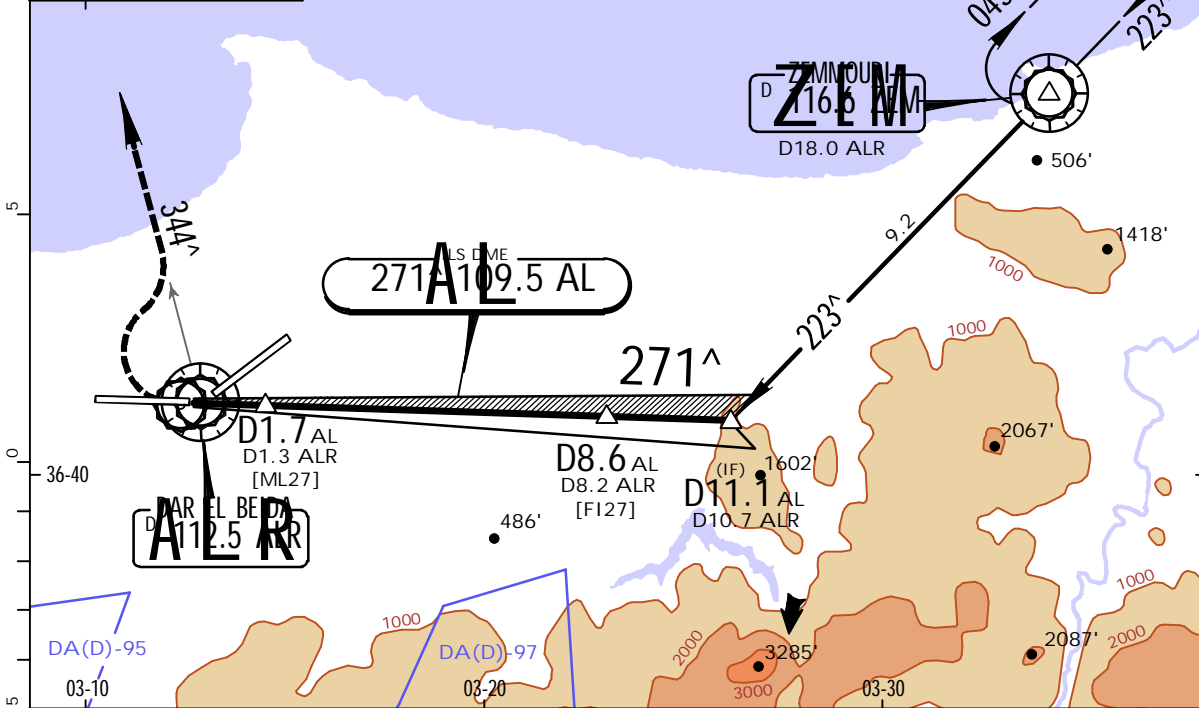
JEPPESEN
9 DEC 22 **11-4**

ALGIERS, ALGERIA
ILS OR LOC Rwy 27

ATIS 128.525		ALGIERS Approach (R) 121.4		ALGIERS Tower 118.7		Ground 121.8	
LOC AL 109.5	Final Apch Crs 271[^]	D8.6 AL 2790' (2724')	ILS DA(H) Refer to Minimums	Apt Elev 82' Rwy 66'			
MISSED APCH: As soon as possible turn RIGHT to intercept R-344 ALR, maintain 2470' and as directed. MAX 185 KT.							MSA ZEM VOR
Alt Set: hPa		Rwy Elev: 2 hPa		Trans level: By ATC		Trans alt: 3940'	

FT/METER CONVERSION QNH

3940'	-	1200m
2790'	-	850m
2470'	-	750m



Gnd speed-Kts	70	90	100	120	140	160	PAPI-L	As soon as possible	2470' ALR on 112.5 R-344	
ILS GS or LOC Descent Angle	3.00 [^]	372	478	531	637	743				849
MAP at D1.7 AL/D1.3 ALR										

STRAIGHT-IN LANDING RWY 27		CIRCLE-TO-LAND			
ILS DA(H) A: 266' (200') C: 286' (220') B: 276' (210') D: 296' (230')		LOC (GS out) MDA(H) 570' (504')			
RVR 1200m		Not authorized South of airport			
A		2300m	Max Kts 100	650' (568')	2500m
B			135	720' (638')	2900m
C			180	1370' (1288')	5000m
D			205		

DAAG/ALG

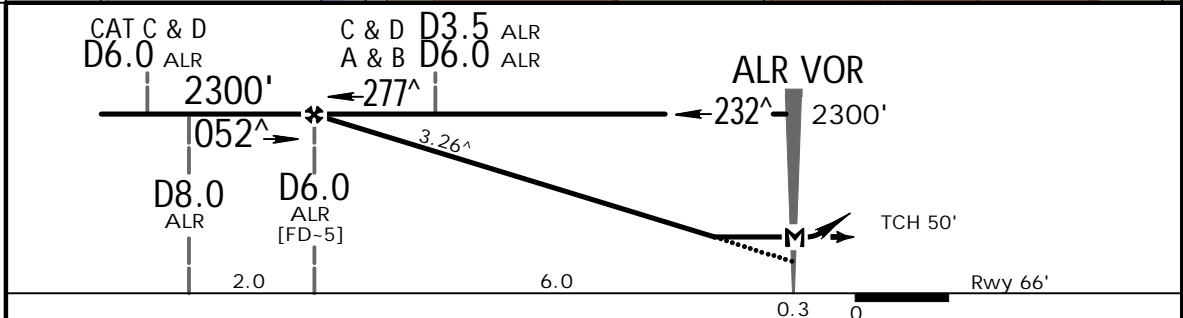
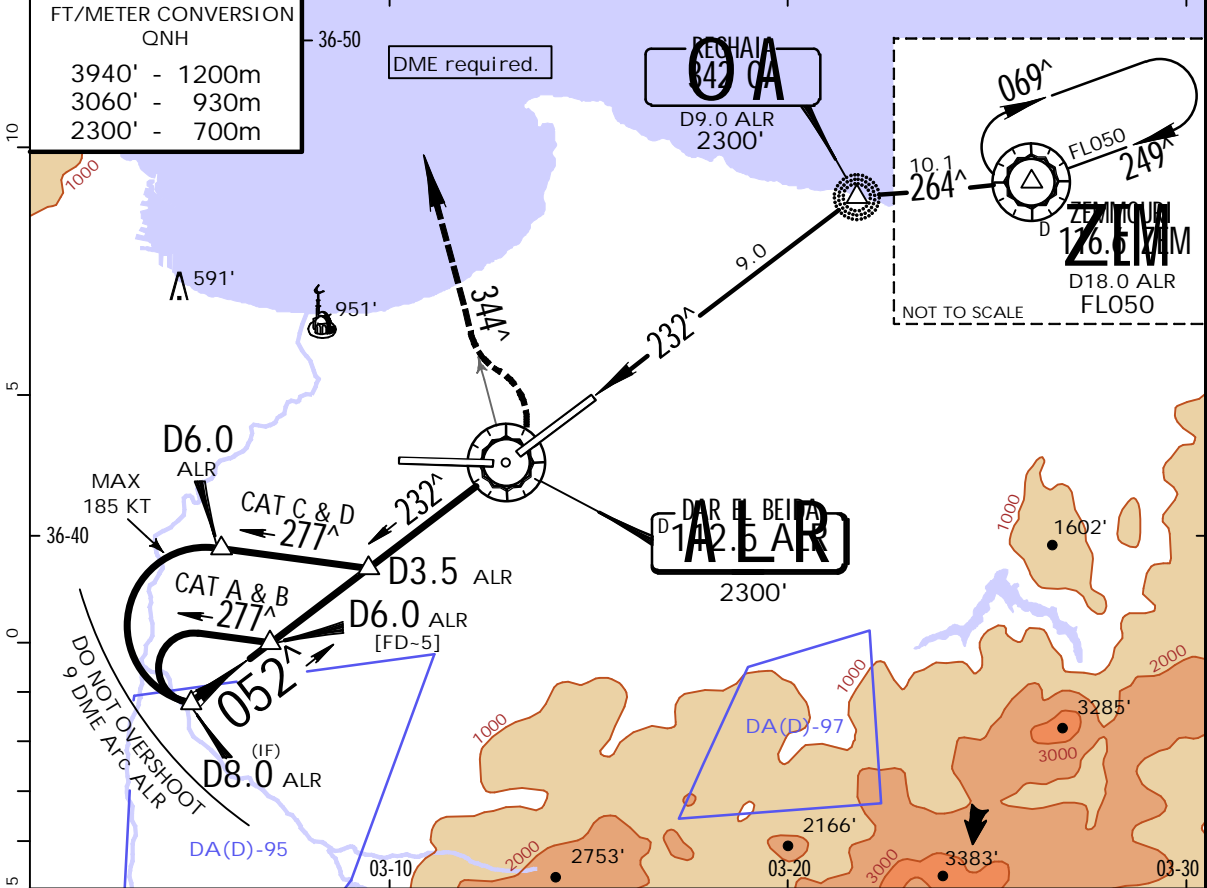
HOUARI BOUMEDIENE

JEPPESEN
9 DEC 22 (13-1)

ALGIERS, ALGERIA

VOR Rwy 05

ATIS 128.525		ALGIERS Approach (R) 121.4		ALGIERS Tower 118.7		Ground 121.8	
VOR ALR 112.5	Final Apch Crs 052 [^]	D6.0 ALR 2300' (2234')	MDA(H) 530' (464')	Apt Elev 82' Rwy 66'			
MISSED APCH: Turn LEFT to intercept R-344 ALR, maintain 3060' and as directed.							
Alt Set: hPa	Rwy Elev: 2 hPa	Trans level: By ATC		Trans alt: 3940'		MSA ZEM VOR	



Gnd speed-Kts	70	90	100	120	140	160	PAPI-L		ALR 112.5 R-344
Descent Angle	3.26 [^]	404	519	577	692	923			
MAP at ALR VOR									

STRAIGHT-IN LANDING RWY 05				CIRCLE-TO-LAND			
MDA(H) 530' (464')				Not authorized South of airport			
A	RVR 1500m VIS 1600m			Max Kts	MDA(H)		
B				100	680' (598')	2700m	
C				135	780' (698')	3200m	
D				180	1440' (1358')	5000m	
				205	1960' (1878')	5000m	

DAAG/ALG

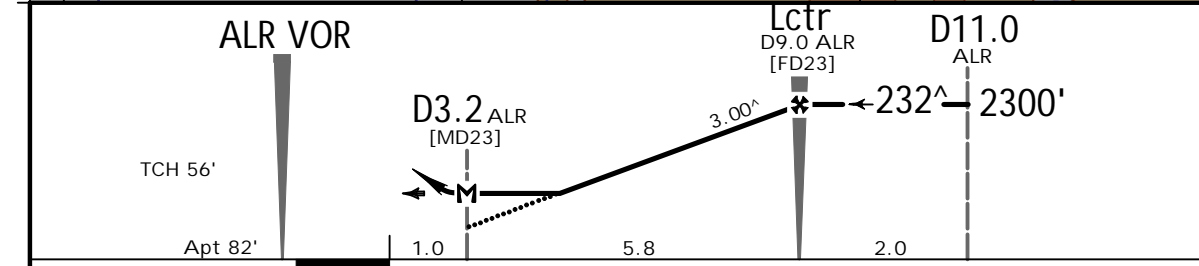
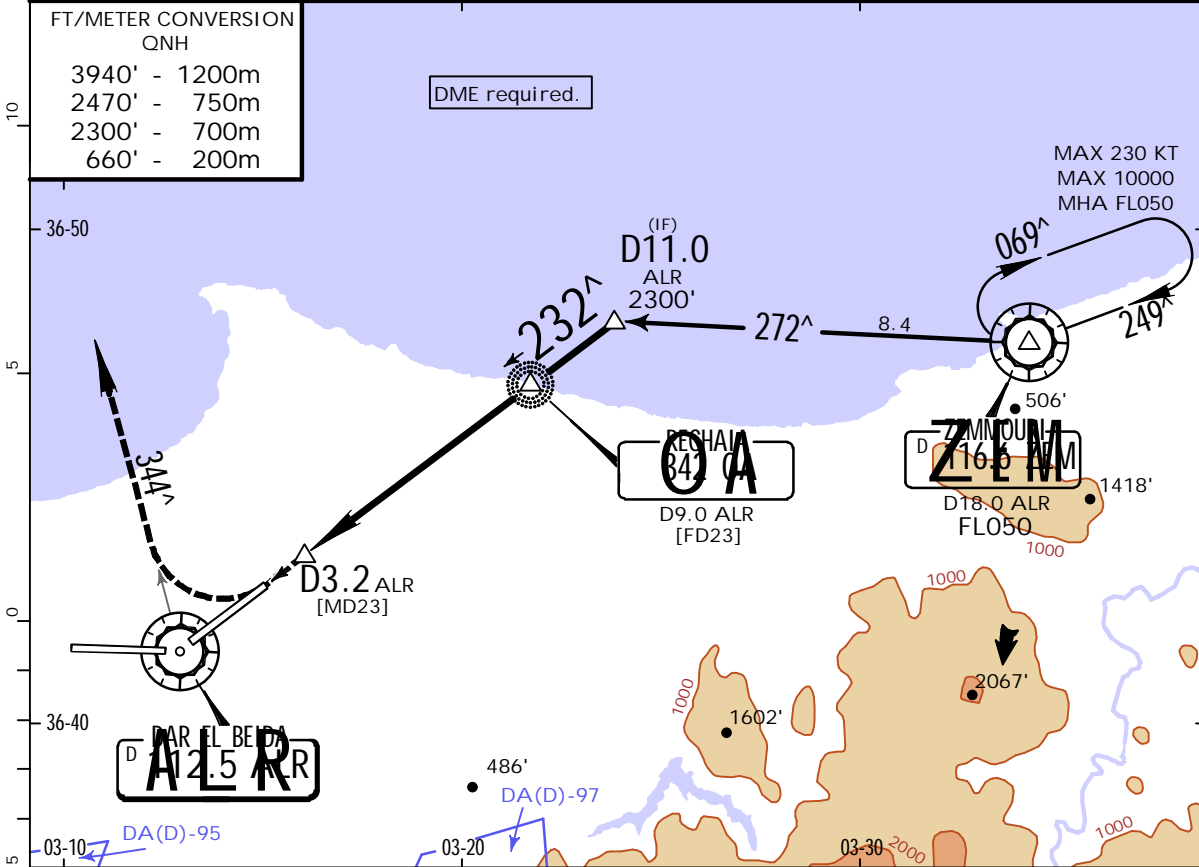
HOUARI BOUMEDIENE

JEPPESEN
9 DEC 22 (13-2)

ALGIERS, ALGERIA

VOR Rwy 23

ATIS 128.525		ALGIERS Approach (R) 121.4		ALGIERS Tower 118.7		Ground 121.8	
VOR ALR 112.5	Final Apch Crs 232 [^]	Lctr 2300' (2218')	MDA(H) 490' (408')	Apt Elev 82'			
MISSED APCH: Climb STRAIGHT AHEAD to 660', then turn RIGHT to climb and follow R-344 ALR, maintain 2470' and as directed.							
Alt Set: hPa		Apt Elev: 3 hPa		Trans level: By ATC		Trans alt: 3940'	



Gnd speed-Kts	70	90	100	120	140	160		660'	2470'	ALR
Descent Angle	3.00 [^]	372	478	531	637	849		↑	RT	onto 112.5
MAP at D3.2 ALR										

STRAIGHT-IN LANDING RWY 23				CIRCLE-TO-LAND			
MDA(H) 490' (408')				Not authorized South of airport			
ALS out				Max Kts	MDA(H)		
A	1100m		RVR 1500m VIS 1600m	100	680' (598')	2700m	
B				135	780' (698')	3200m	
C	RVR 1500m VIS 1600m		2000m	180	1440' (1358')	5000m	
D				205	1960' (1878')	5000m	

DAAG/ALG
HOUARI BOUMEDIENE

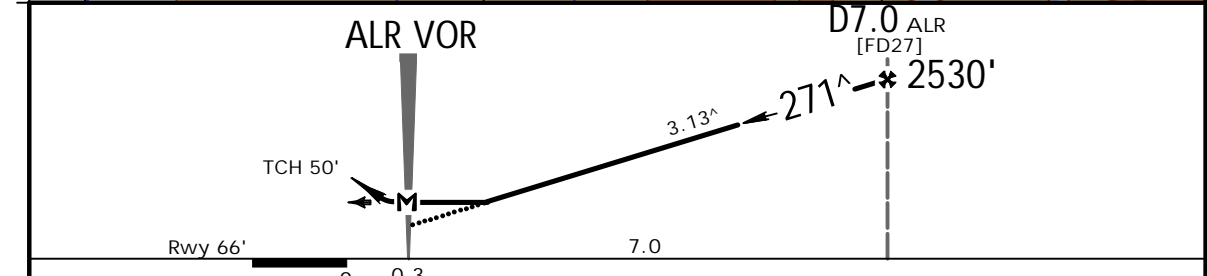
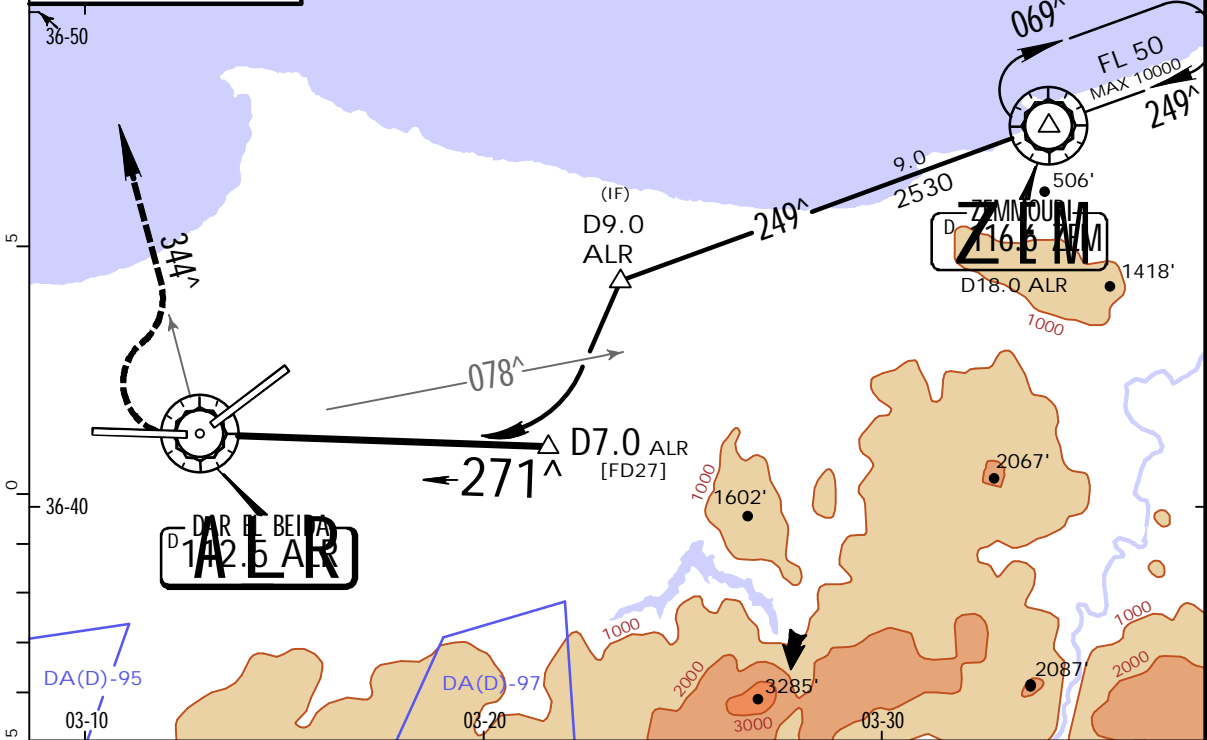
JEPPESEN
9 DEC 22 **(13-3)**

ALGIERS, ALGERIA
VOR DME Rwy 27

ATIS 128.52		ALGIERS Approach (R) 121.4		ALGIERS Tower 118.7		Ground 121.8	
VOR ALR 112.5	Final Apch Crs 271[^]	Minimum Alt D7.0 ALR 2530' (2464')	MDA(H) 520' (454')	Apt Elev 82' Rwy 66'			
MISSED APCH: Climbing turn RIGHT onto R-344 ALR, maintain 2470' and as directed.							
Alt Set: hPa		Rwy Elev: 2 hPa		Trans level: By ATC		Trans alt: 3940'	
MSA ZEM VOR							

FT/METER CONVERSION QNH

3940'	-	1200m
2530'	-	770m
2470'	-	750m



Gnd speed-Kts	70	90	100	120	140	160	PAPI-L	2470' ALR RT onto 112.5 R-344	
Descent Angle 3.13 [^]	388	498	554	665	775	886			
MAP at ALR VOR									

STRAIGHT-IN LANDING RWY 27				CIRCLE-TO-LAND			
MDA(H) 520' (454')				Not authorized South of airport			
A	2400m			Max Kts	MDA(H)		
B				100	650' (568')	2500m	
C				135	720' (638')	2900m	
D				180	1370' (1288')		5000m
				205			

Chart changes since cycle 06-2023

ADD = added chart, REV = revised chart, DEL = deleted chart.

ACT	PROCEDURE IDENT	INDEX	REV DATE	EFF DATE
ALGIERS, (HOUARI BOUMEDIENE - DAAG)				
REV	PARKING STANDS	10-9B	24 Mar 2023	
REV	INS COORDINATES	10-9C	24 Mar 2023	

TERMINAL CHART CHANGE NOTICES

Chart Change Notices for Airport DAAG

Type: Terminal

Effectivity: Temporary

Begin Date: 20190228

End Date: Until Further Notice

(10-3F/3G) SIDs LABRO 1A, 1B, 1C & 1D under clarification.

Chart Change Notices for Country DZA

Type: Gen Tmnl

Effectivity: Temporary

Begin Date: Immediately

End Date: Until Further Notice

Alt Set to read hPa instead of MB.