

List of pages in this Trip Kit

Trip Kit Index

Airport Information For SCRM

Terminal Charts For SCRM

Revision Letter For Cycle 11-2024

Change Notices

Notebook

General Information

Location: ANTARTICA CHILENA CHL
ICAO/IATA: SCRM / TNM
Lat/Long: S62° 11.45', W058° 59.20'
Elevation: 147 ft

Airport Use: Public
Daylight Savings: Observed
UTC Conversion: +4:00 = UTC
Magnetic Variation: 10.6° E

Customs: No
Airport Type: IFR
Landing Fee: No
Control Tower: Yes
Jet Start Unit: No
LLWS Alert: No
Beacon: Yes

Sunrise: 1304 Z
Sunset: 1843 Z

Runway Information

Runway: 11
Length x Width: 4239 ft x 128 ft
Surface Type: gravel
TDZ-Elev: 142 ft
Lighting: Edge, REIL

Runway: 29
Length x Width: 4239 ft x 128 ft
Surface Type: gravel
TDZ-Elev: 127 ft
Lighting: Edge, REIL

Communication Information

Marsh Tower: 118.100
Marsh Approach: 119.700

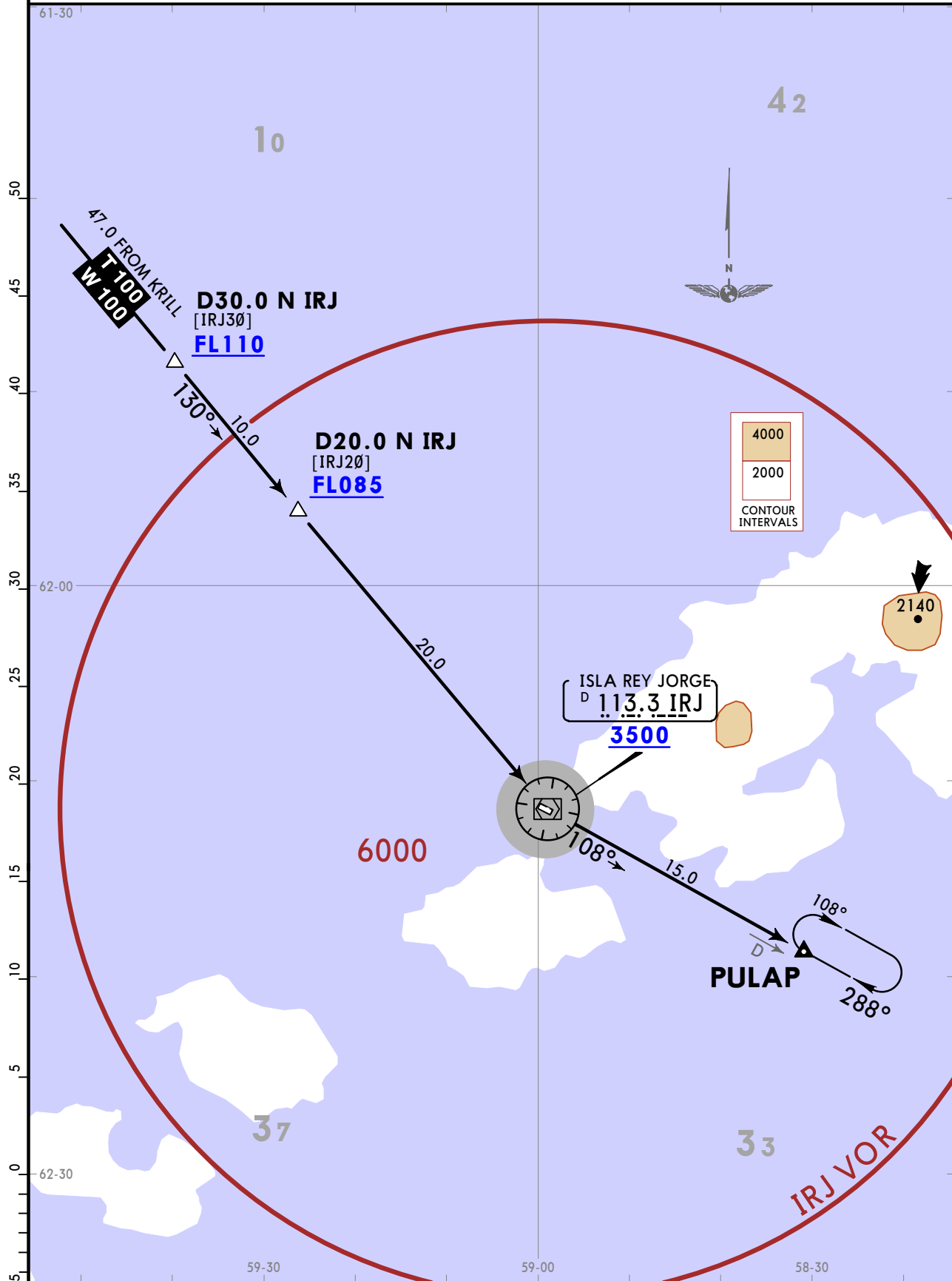
SCRM/TNM

JEPPESEN ANTARTICA CHILENA, CHILE

TENIENTE R MARSH MARTIN 19 JAN 24 (10-2A) **STAR**

Apt Elev 147 Alt Set: hPa Trans level: By ATC

PULAP 1 ARRIVAL [PULAP1]



ROUTING
On airway T-100/W-100, cross D30.0 N IRJ at or above FL110, cross D20.0 N IRJ at or above FL085, continue descent to IRJ VOR at or above 3500, then direct to PULAP, enter holding or according to ATC clearance.

SCRM/TNM

JEPPESEN ANTARTICA CHILENA, CHILE

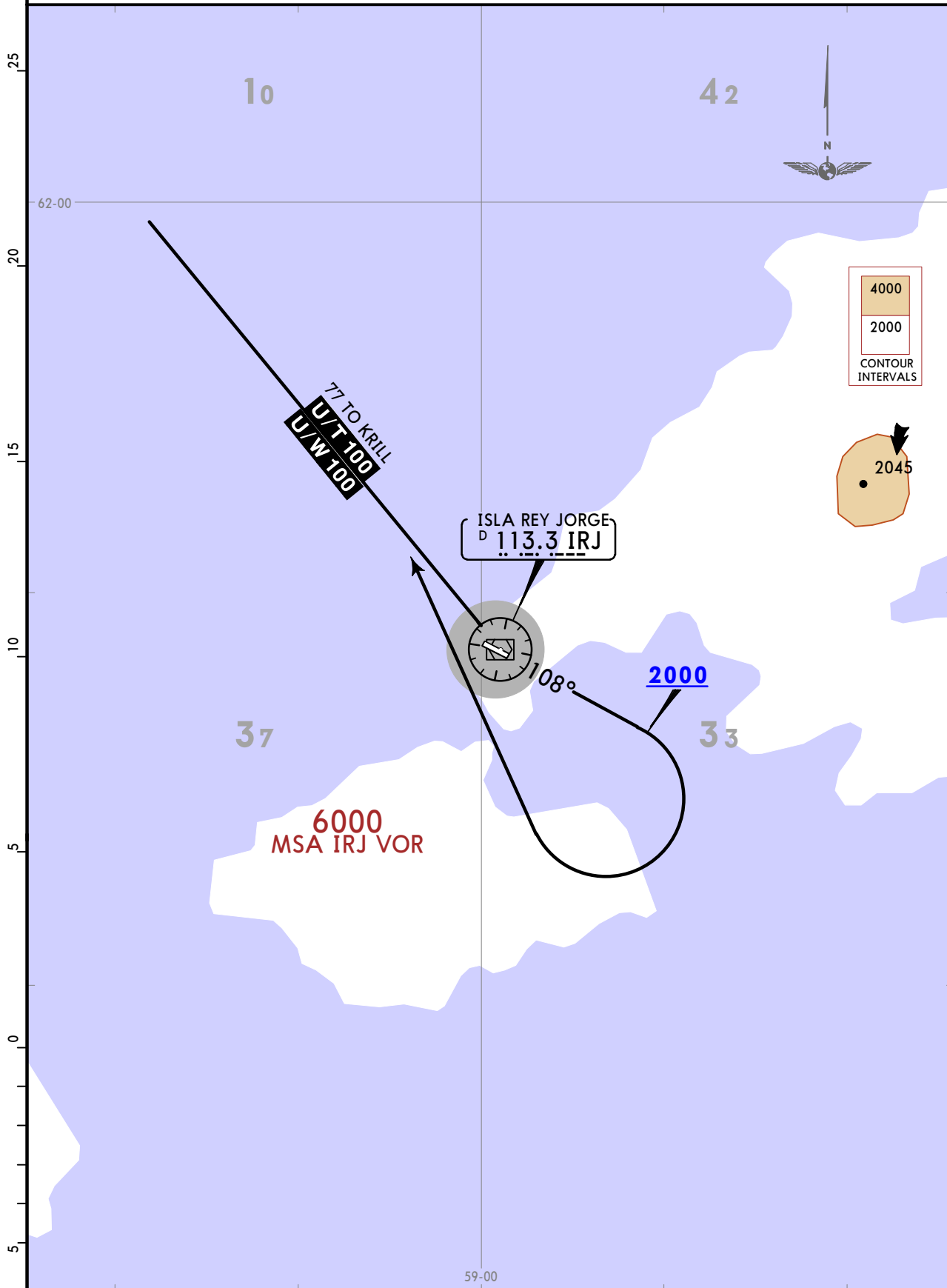
TENIENTE R MARSH MARTIN 19 JAN 24 10-3

SID

Apt Elev
147

Trans alt: 3500

ALBAT 1 DEPARTURE
[ALBAT1]
(RWY 11)



INITIAL CLIMB

Climb on IRJ R108 to 2000, then turn RIGHT to intercept airway U/T-100, U/W-100.

CHANGES: Reissue.

© JEPPESEN, 2021, 2024. ALL RIGHTS RESERVED.

SCRM/TNM

JEPPESEN ANTARTICA CHILENA, CHILE

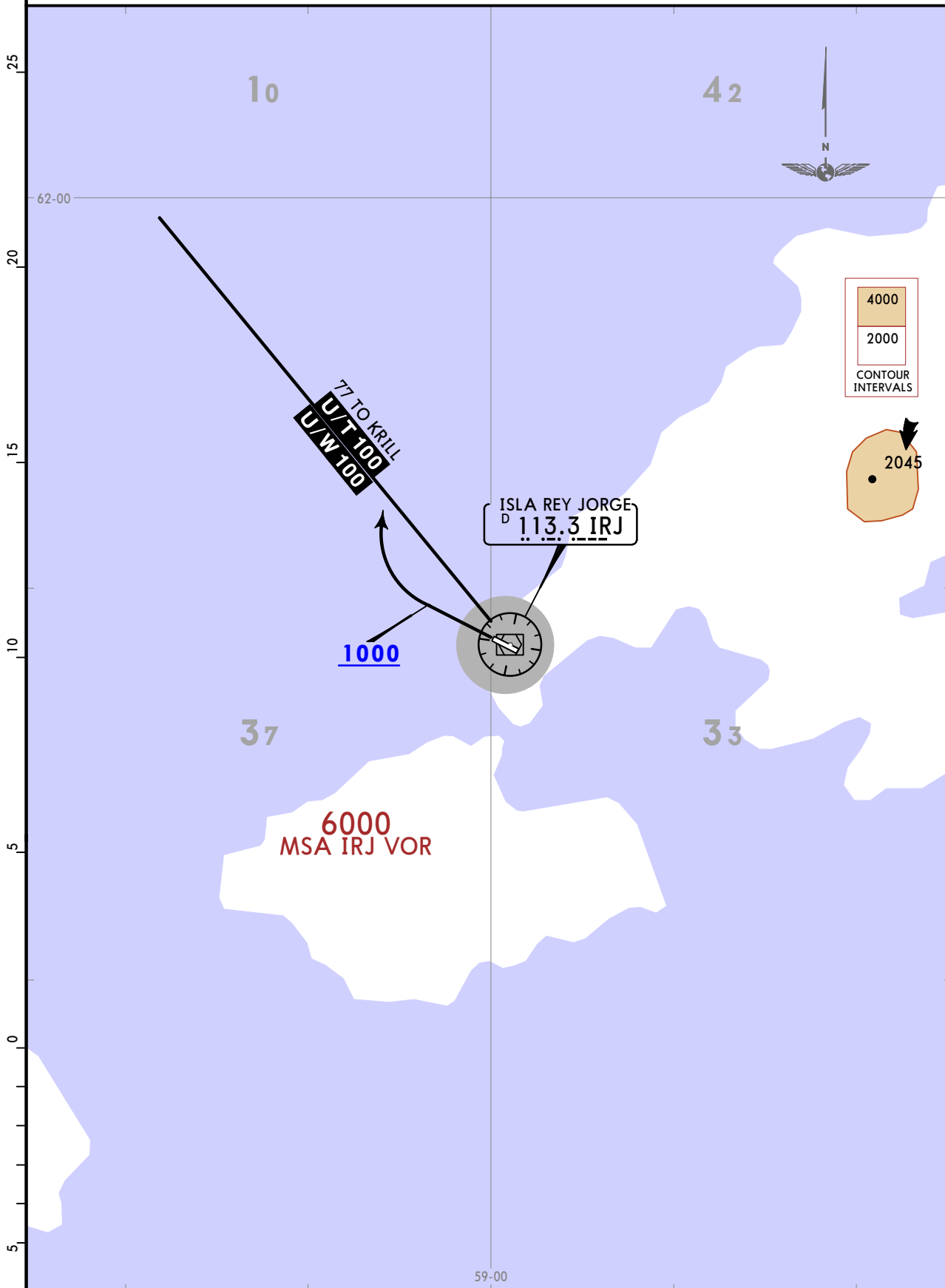
TENIENTE R MARSH MARTIN 19 JAN 24 (10-3A)

SID

Apt Elev
147

Trans alt: 3500

EIKEN 1 DEPARTURE
[EIKEN1]
(RWY 29)



INITIAL CLIMB

Climb on runway heading to 1000, then turn RIGHT to intercept airway U/T-100, U/W-100.

SCRM/TNM

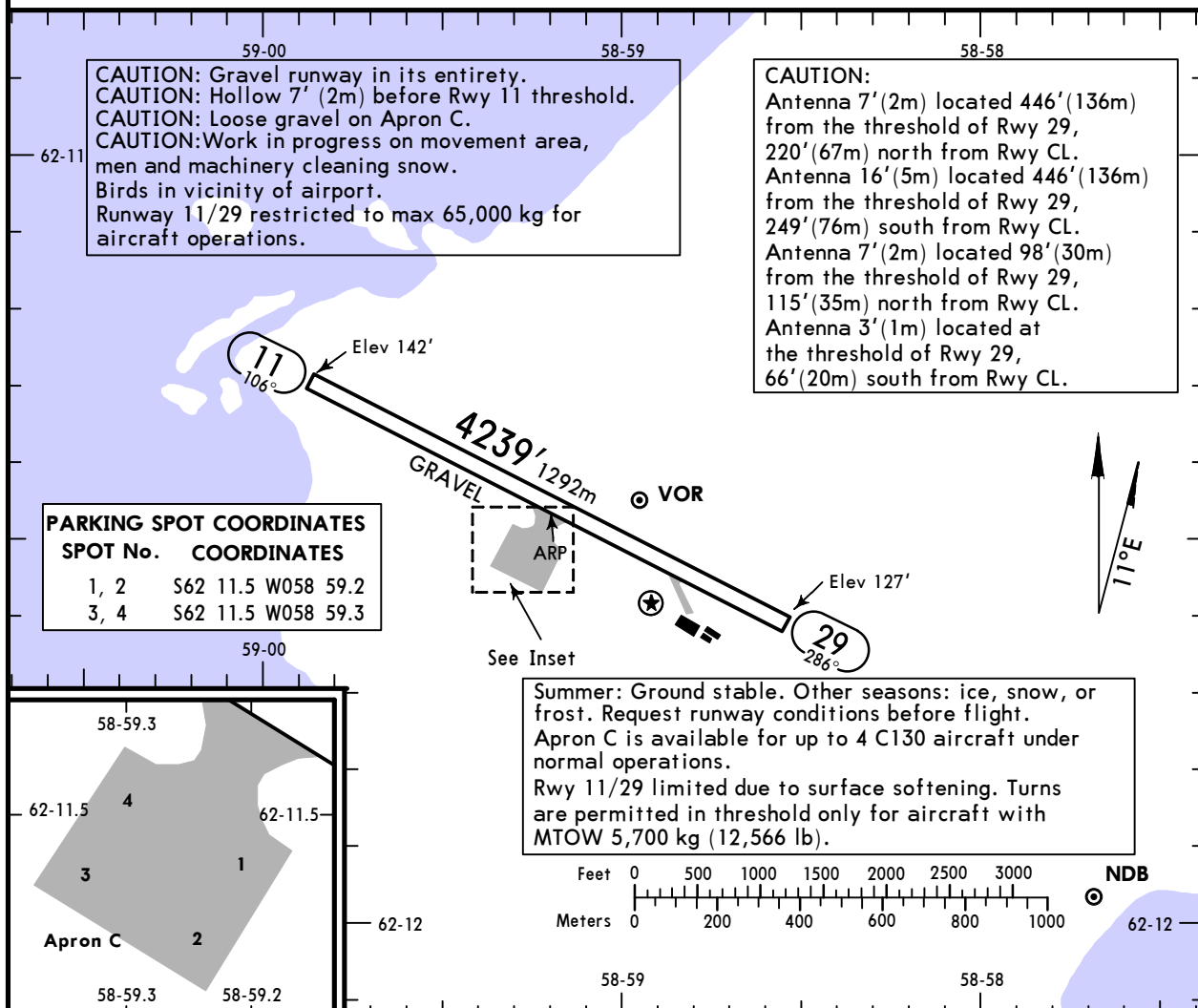
Apt Elev **147'**
S62 11.5 W058 59.2

JEPPESEN ANTARTICA CHILENA, CHILE

19 JAN 24 (10-9)

TENIENTE R MARSH MARTIN

*MARSH Tower 118.1



ADDITIONAL RUNWAY INFORMATION

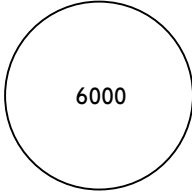
RWY	USABLE LENGTHS	LANDING BEYOND	TAKE-OFF	WIDTH
11 29	HIRL REIL PAPI-L (angle 3.0°)			128' 39m

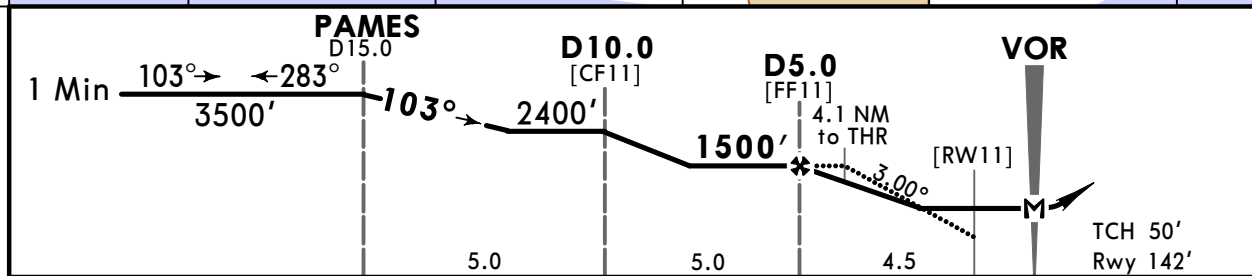
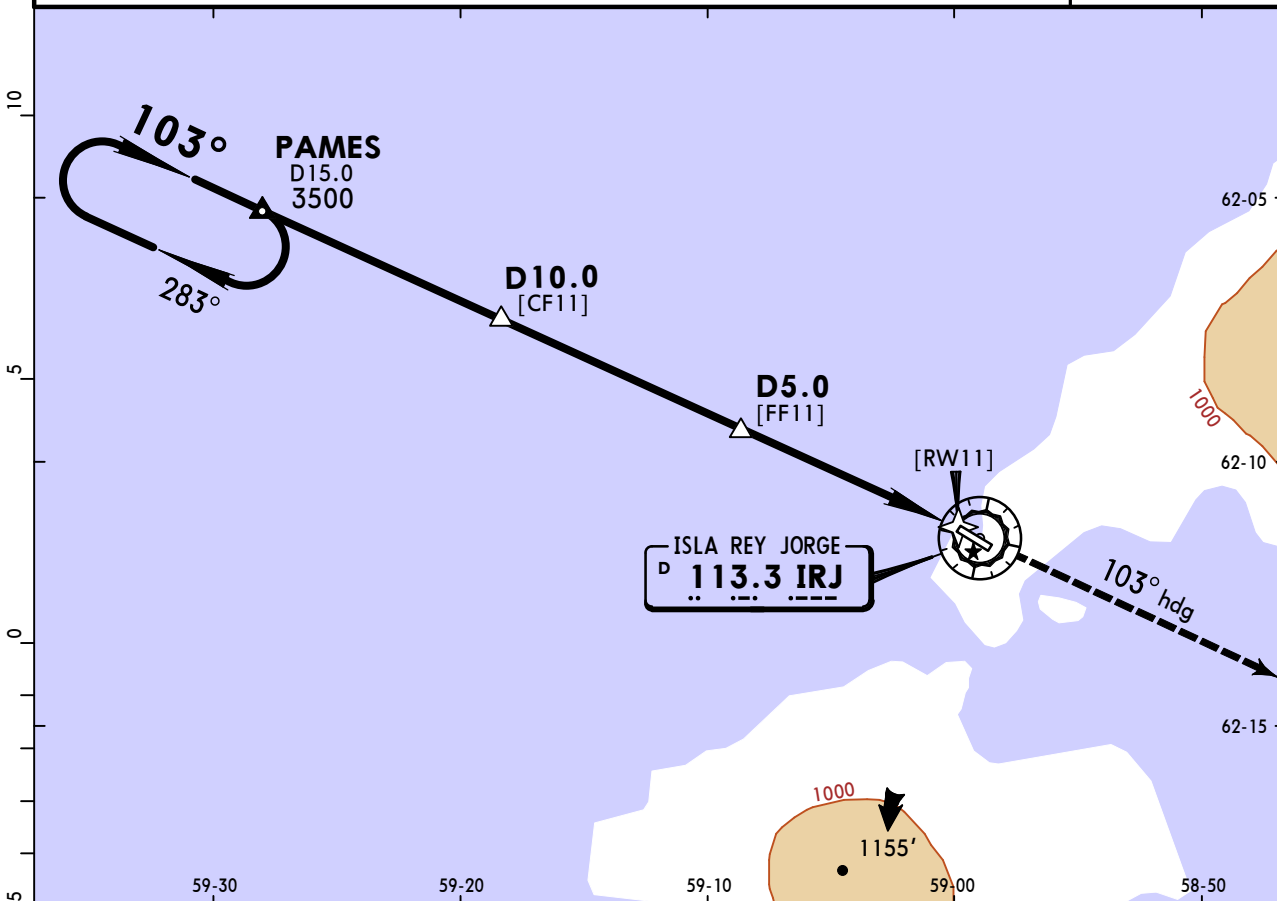
TAKE-OFF		FOR FILING AS ALTERNATE	
All Rwys		Based on expected IAP's to be used at Alternate Airport for ETA	
1 & 2 Eng	Available Landing Minimums	CEILING	(Highest DH/MDH from available IAP's) DH/MDH + 200'
3 & 4 Eng		VISIBILITY	(Highest applicable VIS from available IAP's) APCH VIS + 800m

SCRM/TNM
TENIENTE R MARSH MARTIN

JEPPESEN
(13-1) 19 JAN 24

ANTARTICA CHILENA, CHILE
CAT A, B & C **VOR Rwy 11**

MARSH Approach				*MARSH Tower			
119.7				118.1			
VOR IRJ 113.3	Final Apch Crs 103°	D5.0 1500' (1358')	MDA(H) 760' (618')	Apt Elev 147'	 6000 MSA IRJ VOR		
MISSED APCH: Climb to 3500' on 103° heading, then follow ATC instructions.							
Alt Set: hPa Rwy Elev: 5 hPa Trans level: By ATC Trans alt: 3500'							
1. DME required. 2. CAUTION: Request information, possible icebergs in approach zone. Readings from radio altimeters and radar altimeters could be erratic over ice and snow.							



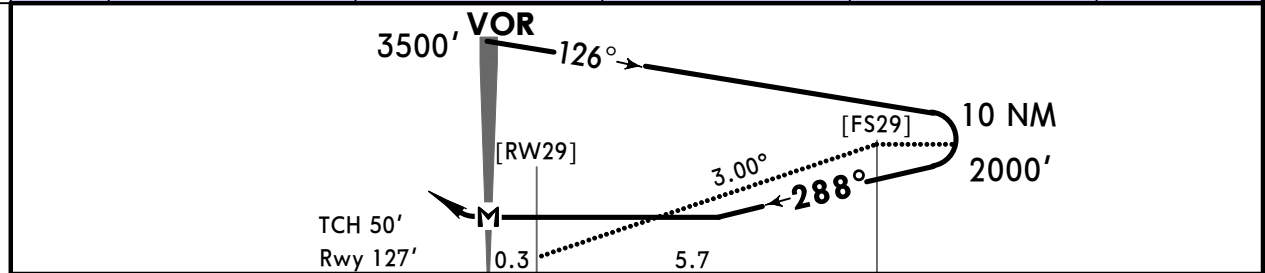
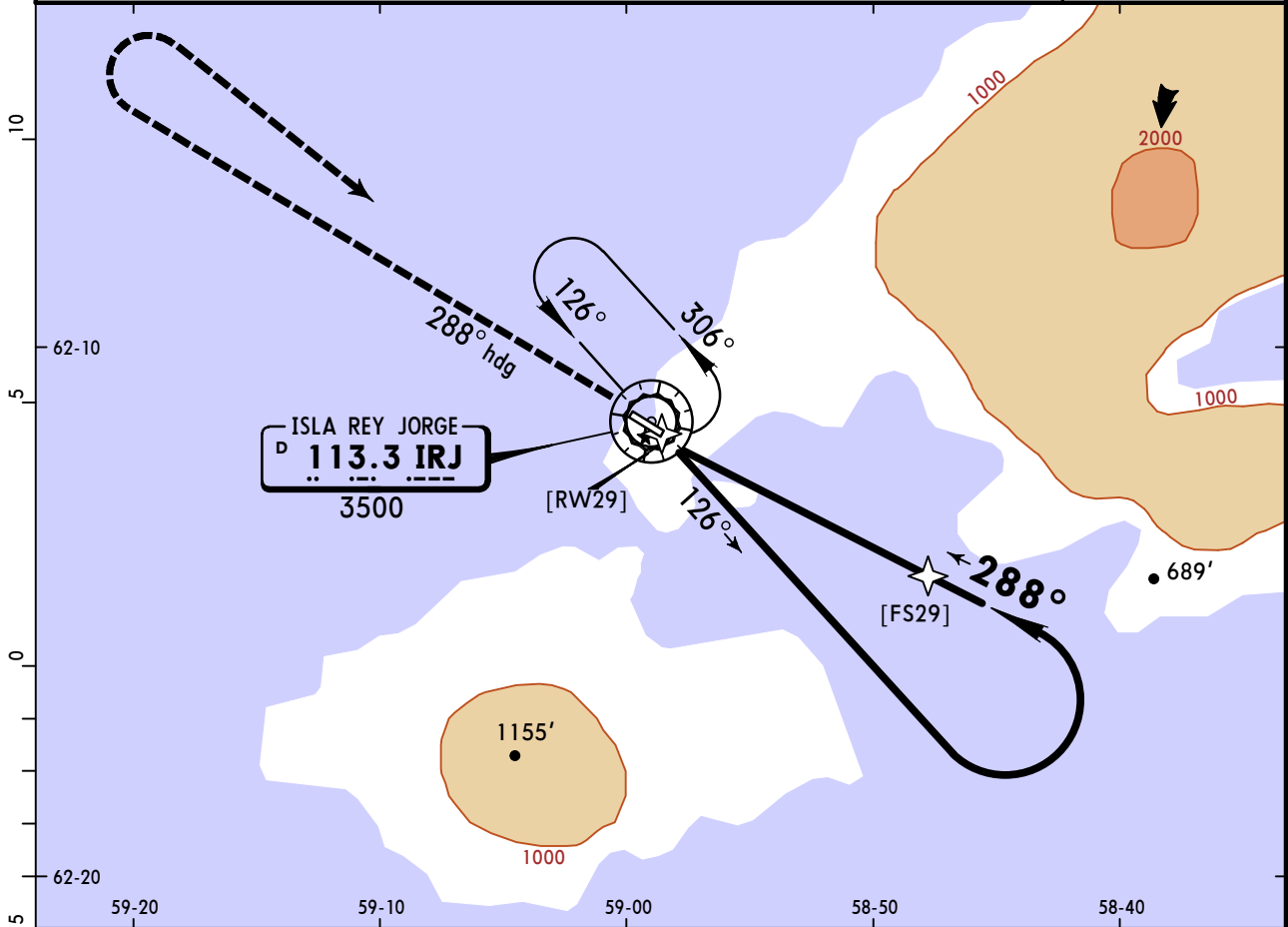
Gnd speed-Kts	70	90	100	120	140	160	REIL PAPI-L	3500'	on ↑	103° hdg
Descent Angle 3.00°	372	478	531	637	743	849				
MAP at VOR										

STRAIGHT-IN LANDING RWY 11					CIRCLE-TO-LAND				
MDA(H) 760' (618')					Authorized Only Southwest of Runway		Authorized Only Northeast of Runway		
A	1.6 km				Max Kts	MDA(H)	MDA(H)		
B					100	760' (613') - 1.6 km	840' (693') - 1.6 km		
C					135	860' (713') - 1.6 km	860' (713') - 1.6 km		
D					180	860' (713') - 3.2 km	920' (773') - 3.6 km		
PANS OPS	D					NOT APPLICABLE	NOT APPLICABLE		

SCRM/TNM ANTARTICA CHILENA, CHILE

TENIENTE R MARSH MARTIN (13-2) 19 JAN 24 CAT A, B & C VOR Y Rwy 29

MARSH Approach			*MARSH Tower		
119.7			118.1		
VOR IRJ 113.3	Final Apch Crs 288°	No FAF	MDA(H) 820' (693')	Apt Elev 147'	Rwy 127'
MISSED APCH: Climb to 3500' on 288° heading, turn RIGHT to IRJ VOR and enter holding pattern.					
Alt Set: hPa Rwy Elev: 5 hPa Trans level: By ATC Trans alt: 3500'					
1. CAUTION: Request information, possible icebergs in approach zone. Readings from radio altimeters and radar altimeters could be erratic over ice and snow.					



Gnd speed-Kts	70	90	100	120	140	160	REIL	3500'	288°		IRJ
Descent Angle	3.00°	372	478	531	637	743	PAPI-L	↑	on		hdg
MAP at VOR											

PANS OPS	STRAIGHT-IN LANDING RWY 29		CIRCLE-TO-LAND	
	MDA(H) 820' (693')		Authorized Only Southwest of Runway	Authorized Only Northeast of Runway
A	1.6 km		Max Kts 100 860' (713') - 1.6 km	840' (693') - 1.6 km
B	3.2 km		135 860' (713') - 1.6 km	860' (713') - 1.6 km
C	NOT APPLICABLE		180 860' (713') - 3.2 km	920' (773') - 3.6 km
D	NOT APPLICABLE		NOT APPLICABLE	NOT APPLICABLE

SCRM/TNM

JEPPESSEN

ANTARTICA CHILENA, CHILE

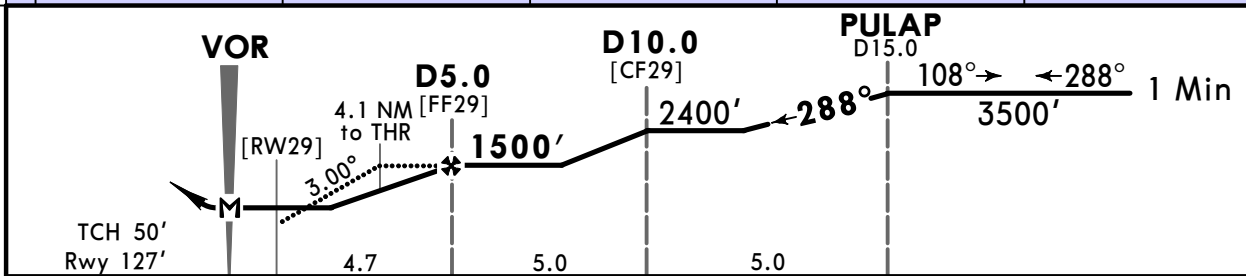
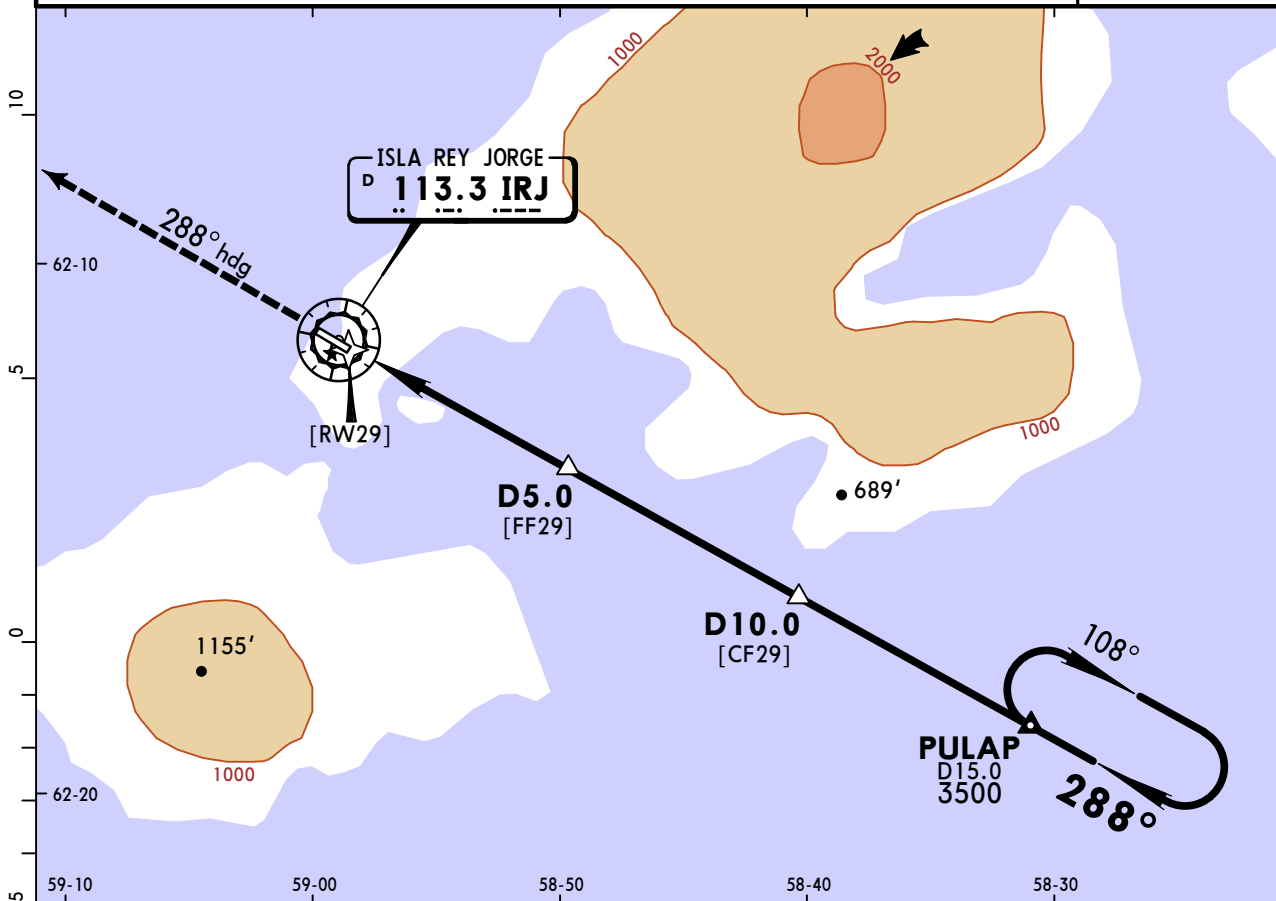
TENIENTE R MARSH MARTIN

(13-3) 19 JAN 24

CAT A, B & C

VOR Z Rwy 29

MARSH Approach				*MARSH Tower		
119.7				118.1		
VOR IRJ 113.3	Final Apch Crs 288°	D5.0 1500' (1373')	MDA(H) 760' (633')	Apt Elev 147'	Rwy 127'	6000 MSA IRJ VOR
MISSED APCH: Climb to 3500' on 288° heading, then follow ATC instructions.						
Alt Set: hPa Rwy Elev: 5 hPa Trans level: By ATC Trans alt: 3500'						
1. DME required. 2. CAUTION: Request information, possible icebergs in approach zone. Readings from radio altimeters and radar altimeters could be erratic over ice and snow.						



Gnd speed-Kts	70	90	100	120	140	160	REIL PAPI-L	3500' on 288° ↑ hdg
Descent Angle 3.00°	372	478	531	637	743	849		
MAP at VOR								

	STRAIGHT-IN LANDING RWY 29		CIRCLE-TO-LAND	
	MDA(H) 760' (633')		Authorized Only Southwest of Runway	Authorized Only Northeast of Runway
A	1.6 km		Max Kts 100 MDA(H) 760' (613') - 1.6 km	840' (693') - 1.6 km
B	1.6 km		135 860' (713') - 1.6 km	860' (713') - 1.6 km
C	2.8 km		180 860' (713') - 3.2 km	920' (773') - 3.6 km
D	NOT APPLICABLE		NOT APPLICABLE	NOT APPLICABLE

Chart changes since cycle 10-2024

ADD = added chart, REV = revised chart, DEL = deleted chart.

ACT	PROCEDURE IDENT	INDEX	REV DATE	EFF DATE
-----	-----------------	-------	----------	----------

ANTARTICA CHILENA, (TTE. RODOLFO MARSH MARTIN - SCRM)

TERMINAL CHART CHANGE NOTICES

No Chart Change Notices for Airport SCRM