

List of pages in this Trip Kit

Trip Kit Index

Airport Information For ZKPY

Terminal Charts For ZKPY

Revision Letter For Cycle 11-2024

Change Notices

Notebook

General Information

Location: PYONGYANG PRK
ICAO/IATA: ZKPY / FNJ
Lat/Long: N39° 12.34', E125° 40.21'
Elevation: 89 ft

Airport Use: Public
Daylight Savings: Not Observed
UTC Conversion: -9:00 = UTC
Magnetic Variation: 8.0° W

Fuel Types: Jet A-1
Repair Types: Minor Engine
Customs: Yes
Airport Type: IFR
Landing Fee: Yes
Control Tower: Yes
Jet Start Unit: No
LLWS Alert: No
Beacon: No

Sunrise: 2013 Z
Sunset: 1058 Z

Runway Information

Runway: 17
Length x Width: 11237 ft x 197 ft
Surface Type: concrete
TDZ-Elev: 89 ft
Lighting: Edge, ALS, Centerline

Runway: 35
Length x Width: 11237 ft x 197 ft
Surface Type: concrete
TDZ-Elev: 79 ft
Lighting: Edge, ALS, Centerline

Communication Information

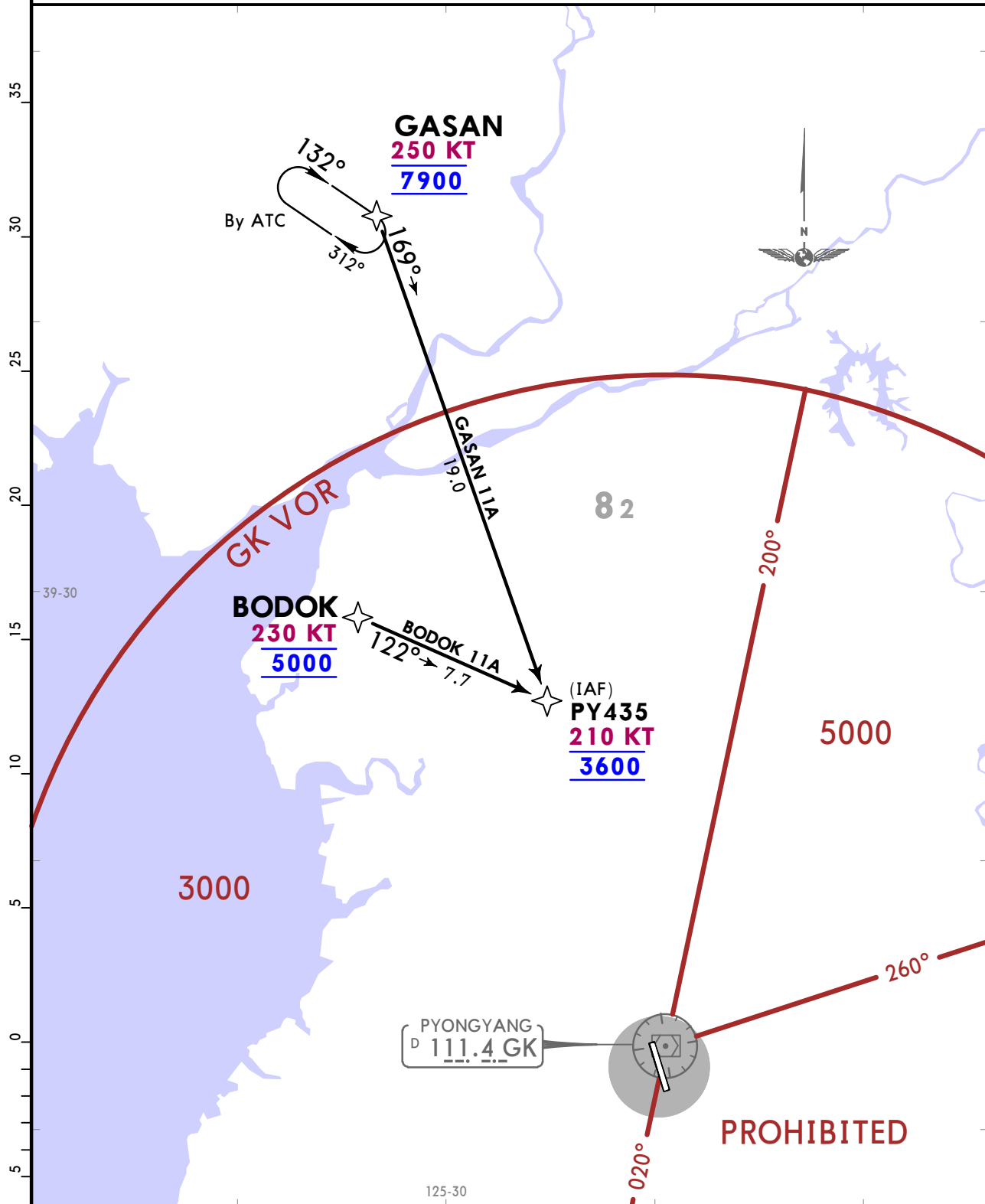
Pyongyang Tower: 118.300
Pyongyang Approach: 133.900

ZKPY/FNJ
SUNAN

22 MAR 24 **10-2** **JEPPESEN PYONGYANG, DPR OF KOREA**
RNAV STAR

Apt Elev 89	Alt Set: hPa Trans level: FL130
	RNP 1.0 RNAV (GNSS)
	Pilots must obtain approval for RNAV STAR on first contact with ATC and carriage of certified GNSS receiver is mandatory.

BODOK 11A [BOD11A]
GASAN 11A [GAS11A]
RNAV ARRIVALS
(RWY 17)



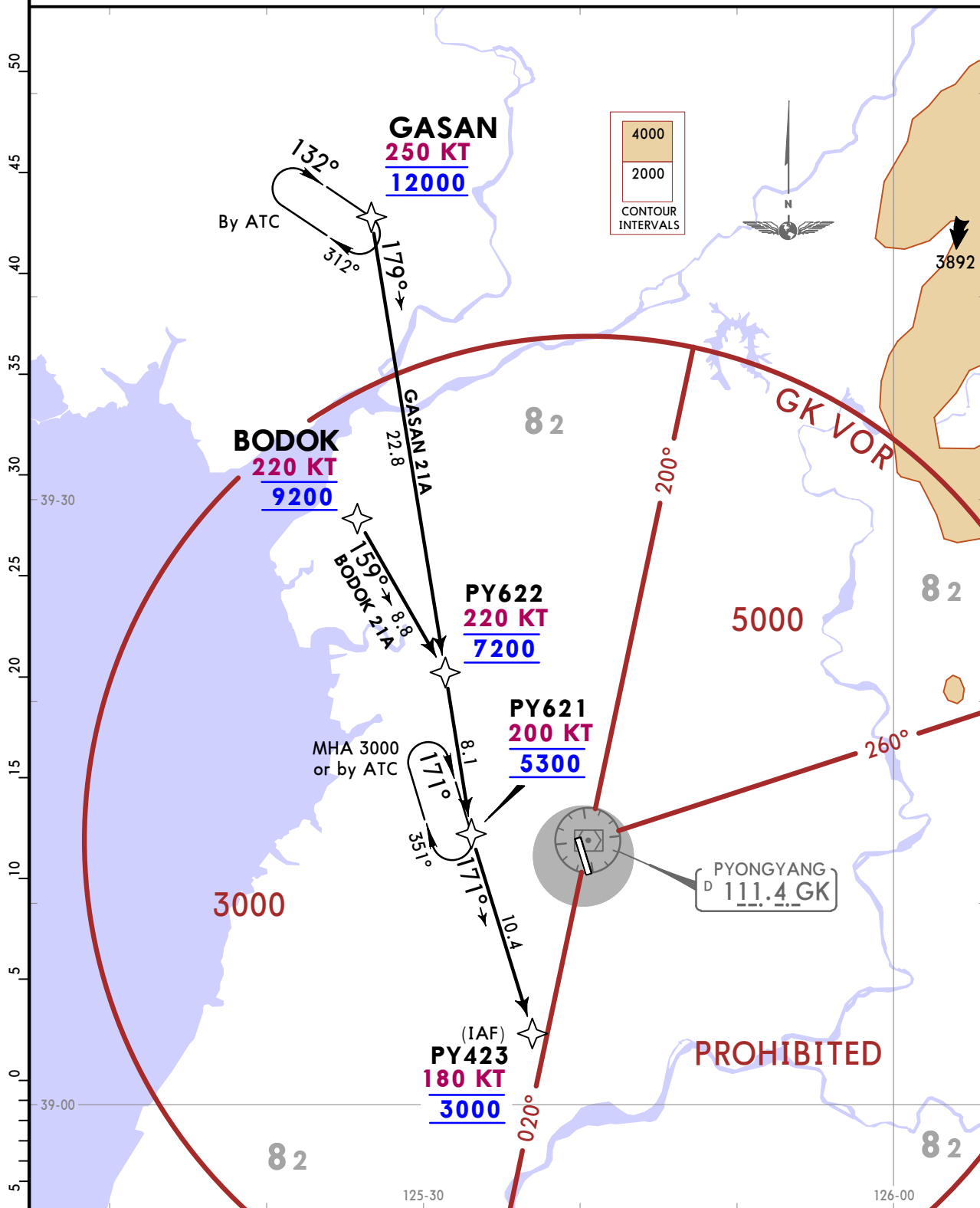
STAR	ROUTING
BODOK 11A	BODOK (K230; 5000) - PY435 (K210; 3600).
GASAN 11A	GASAN (K250; 7900) - PY435 (K210; 3600).

ZKPY/FNJ
SUNAN

JEPPESEN PYONGYANG, DPR OF KOREA
22 MAR 24 10-2A
RNAV STAR

Apt Elev 89	Alt Set: hPa Trans level: FL130
	RNP 1.0 RNAV (GNSS)
	Pilots must obtain approval for RNAV STAR on first contact with ATC and carriage of certified GNSS receiver is mandatory.

**BODOK 21A [BOD21A]
GASAN 21A [GAS21A]
RNAV ARRIVALS
(RWY 35)**



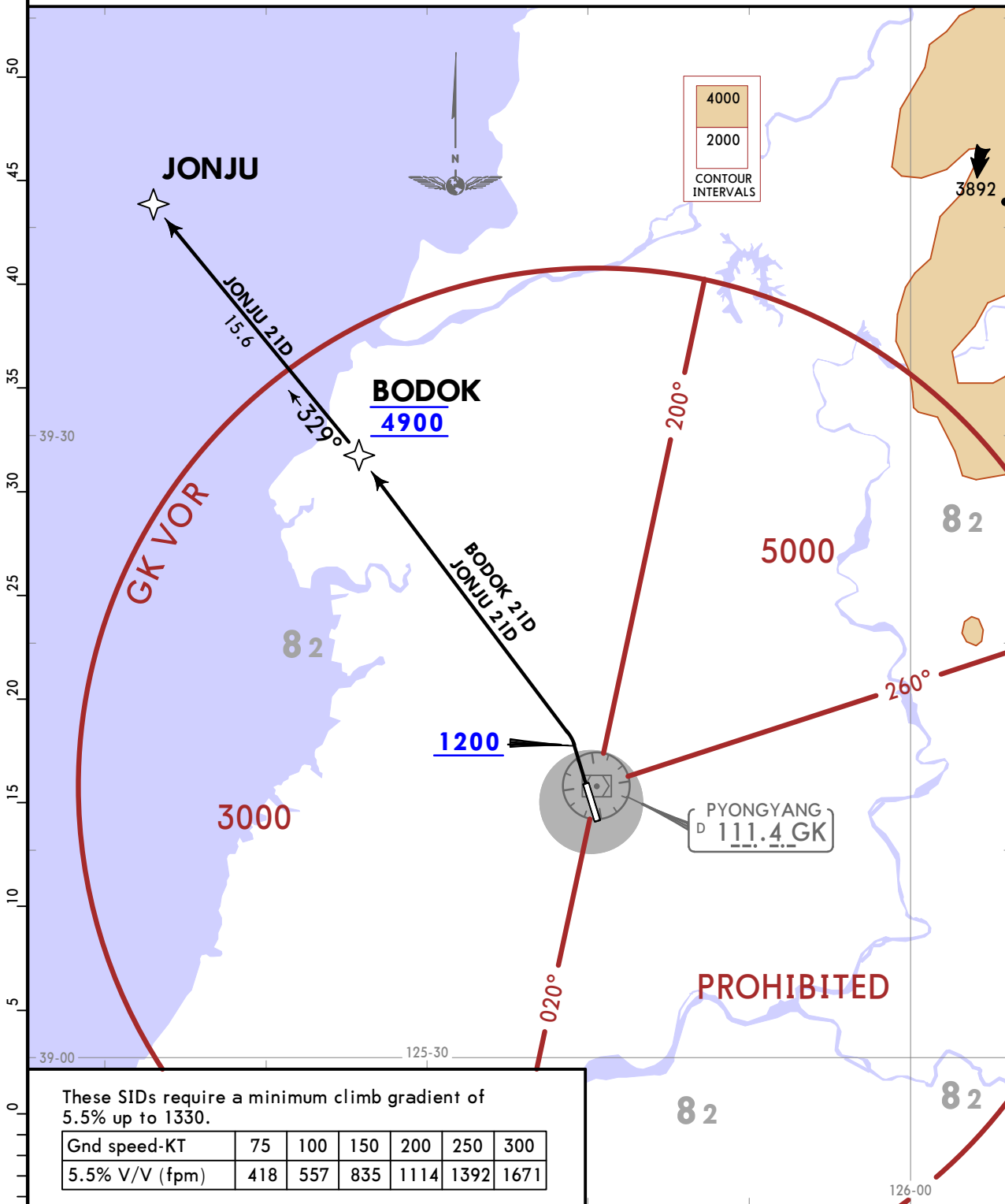
STAR	ROUTING
BODOK 21A	BODOK (K220; 9200) - PY622 (K220; 7200) - PY621 (K200; 5300) - PY423 (K180; 3000).
GASAN 21A	GASAN (K250; 12000) - PY622 (K220; 7200) - PY621 (K200; 5300) - PY423 (K180; 3000).

ZKPY/FNJ
SUNAN

JEPPESEN PYONGYANG, DPR OF KOREA
22 MAR 24 10-3A RNAV SID

Apt Elev 89	Trans alt: 12000
	RNP 1.0 RNAV (GNSS)
	Pilots must obtain approval for RNAV SID on first contact with ATC and carriage of certified GNSS receiver is mandatory.

**BODOK 21D [BOD21D]
JONJU 21D [JON21D]
RNAV DEPARTURES
(RWY 35)**



These SIDs require a minimum climb gradient of 5.5% up to 1330.

Gnd speed-KT	75	100	150	200	250	300
5.5% V/V (fpm)	418	557	835	1114	1392	1671

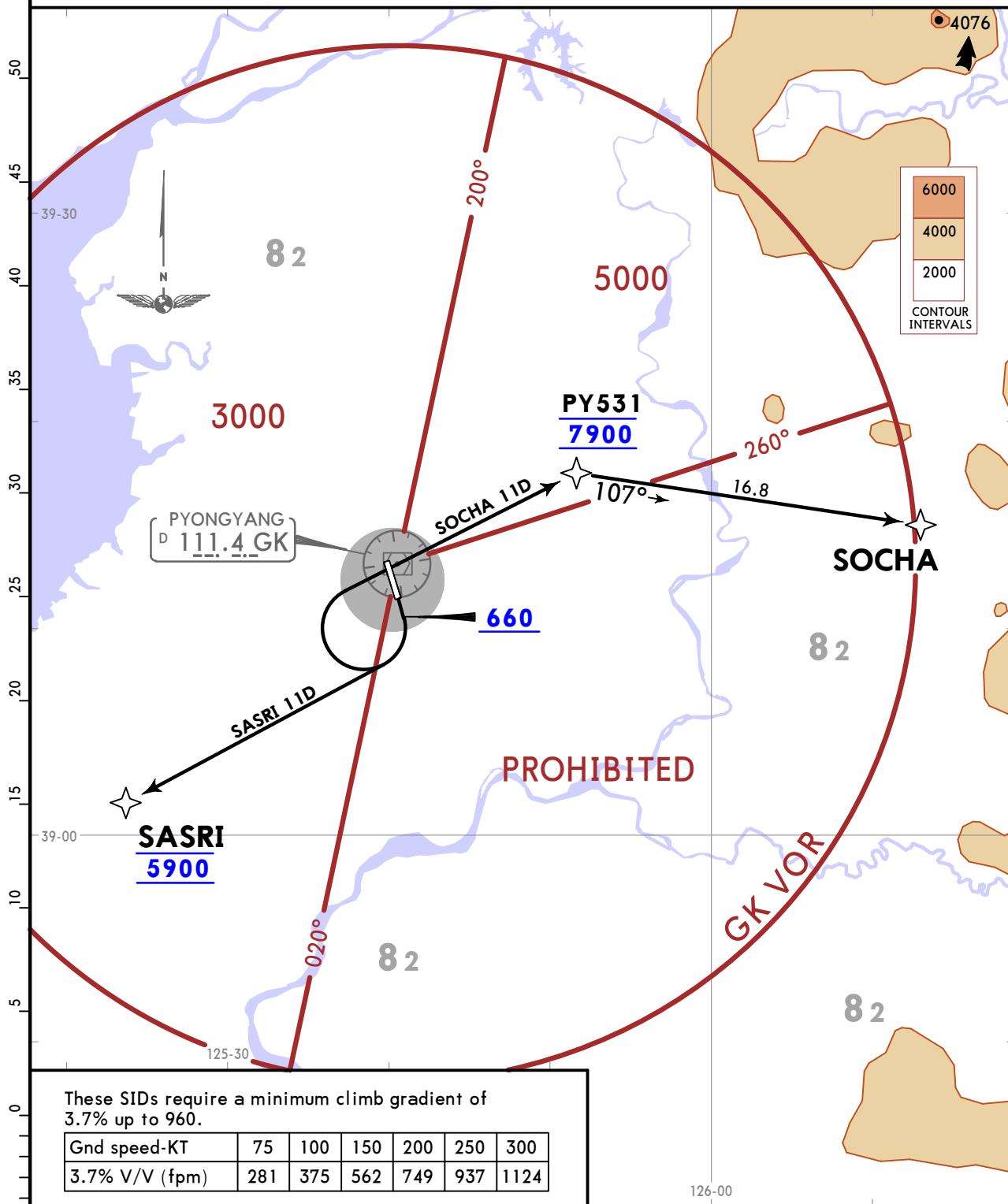
SID	ROUTING
BODOK 21D	Climb straight ahead, at or above 1200 turn LEFT direct to BODOK, or as instructed by ATC.
JONJU 21D	Climb straight ahead, at or above 1200 turn LEFT direct to BODOK, then to JONJU, or as instructed by ATC.

ZKPY/FNJ
SUNAN

JEPPESSEN PYONGYANG, DPR OF KOREA
22 MAR 24 (10-3B) RNAV SID

Apt Elev 89	Trans alt: 12000
	RNP 1.0 RNAV (GNSS)
	Pilots must obtain approval for RNAV SID on first contact with ATC and carriage of certified GNSS receiver is mandatory.

SASRI 11D [SAS11D]
SOCHA 11D [SOC11D]
RNAV DEPARTURES
(RWY 17)



These SIDs require a minimum climb gradient of 3.7% up to 960.

Gnd speed-KT	75	100	150	200	250	300
3.7% V/V (fpm)	281	375	562	749	937	1124

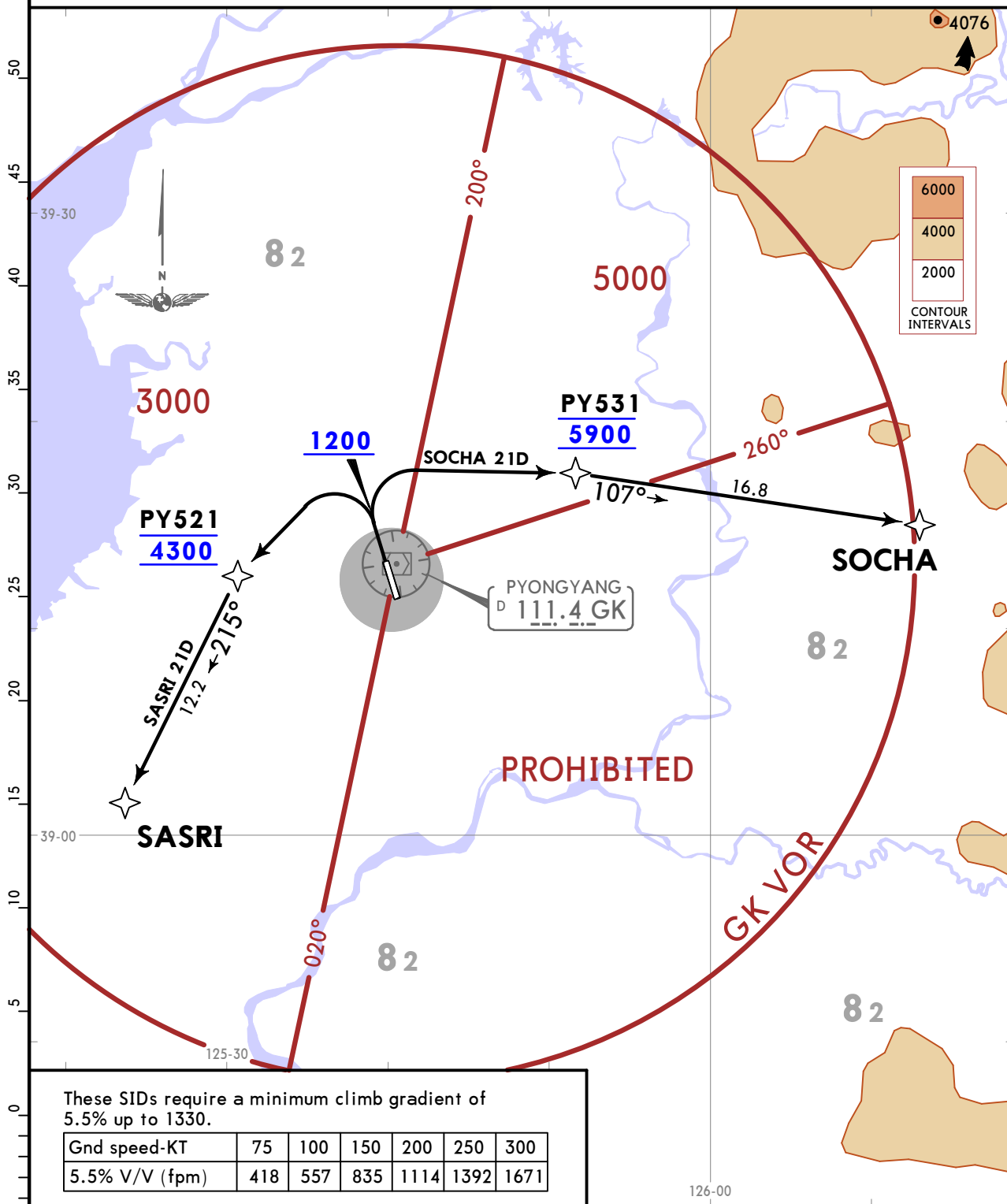
SID	ROUTING
SASRI 11D	Climb straight ahead, at or above 660 turn RIGHT direct to SASRI, or as instructed by ATC.
SOCHA 11D	Climb straight ahead, at or above 660 turn RIGHT direct to PY531, then to SOCHA, or as instructed by ATC.

ZKPY/FNJ
SUNAN

JEPPESSEN PYONGYANG, DPR OF KOREA
22 MAR 24 (10-3C) RNAV SID

Apt Elev 89	Trans alt: 12000
	RNP 1.0 RNAV (GNSS)
	Pilots must obtain approval for RNAV SID on first contact with ATC and carriage of certified GNSS receiver is mandatory.

SASRI 21D [SAS21D]
SOCHA 21D [SOC21D]
RNAV DEPARTURES
(RWY 35)



SID	ROUTING
SASRI 21D	Climb straight ahead, at or above 1200 turn LEFT direct to PY521, then to SASRI, or as instructed by ATC.
SOCHA 21D	Climb straight ahead, at or above 1200 turn RIGHT direct to PY531, then to SOCHA, or as instructed by ATC.

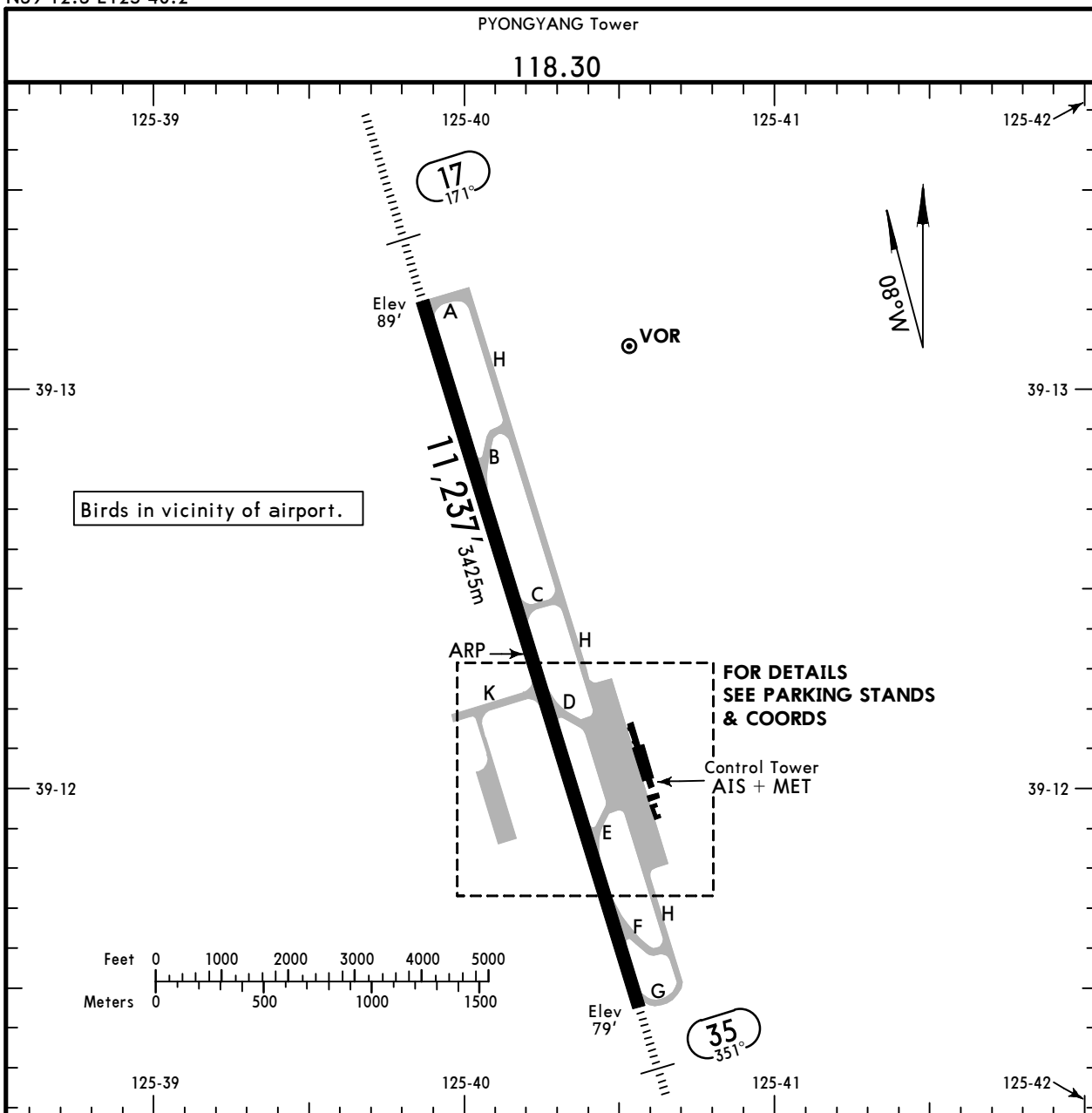
ZKPY/FNJ

Apt Elev 89'
N39 12.3 E125 40.2

JEPPESEN PYONGYANG, DPR OF KOREA

27 JAN 23 (10-9)

SUNAN



ADDITIONAL RUNWAY INFORMATION

RWY	HIRL (60m) ① HIALS SFL PAPI-L(3.0°) HST-D&F	USABLE LENGTHS		TAKE-OFF	WIDTH
		Threshold	Glide Slope		
17	HIRL (60m) ① HIALS SFL PAPI-L(3.0°) HST-D&F		10,122' 3085m		197'
35	HIRL (60m) ① HIALS PAPI-L(3.0°) HST-B		9961' 3036m		60m

① CL (30m spacing)

NOISE ABATEMENT PROCEDURES

Rwy 17 is used for preferential Rwy for noise abatement for take-off and Rwy 35 for landing.
RUN-UP TESTS: Ground running of acft engines for test or maintenance is subject to ATC approval.

TAKE-OFF

AIR CARRIER (JAA)
All Rwys

LVP must be in force

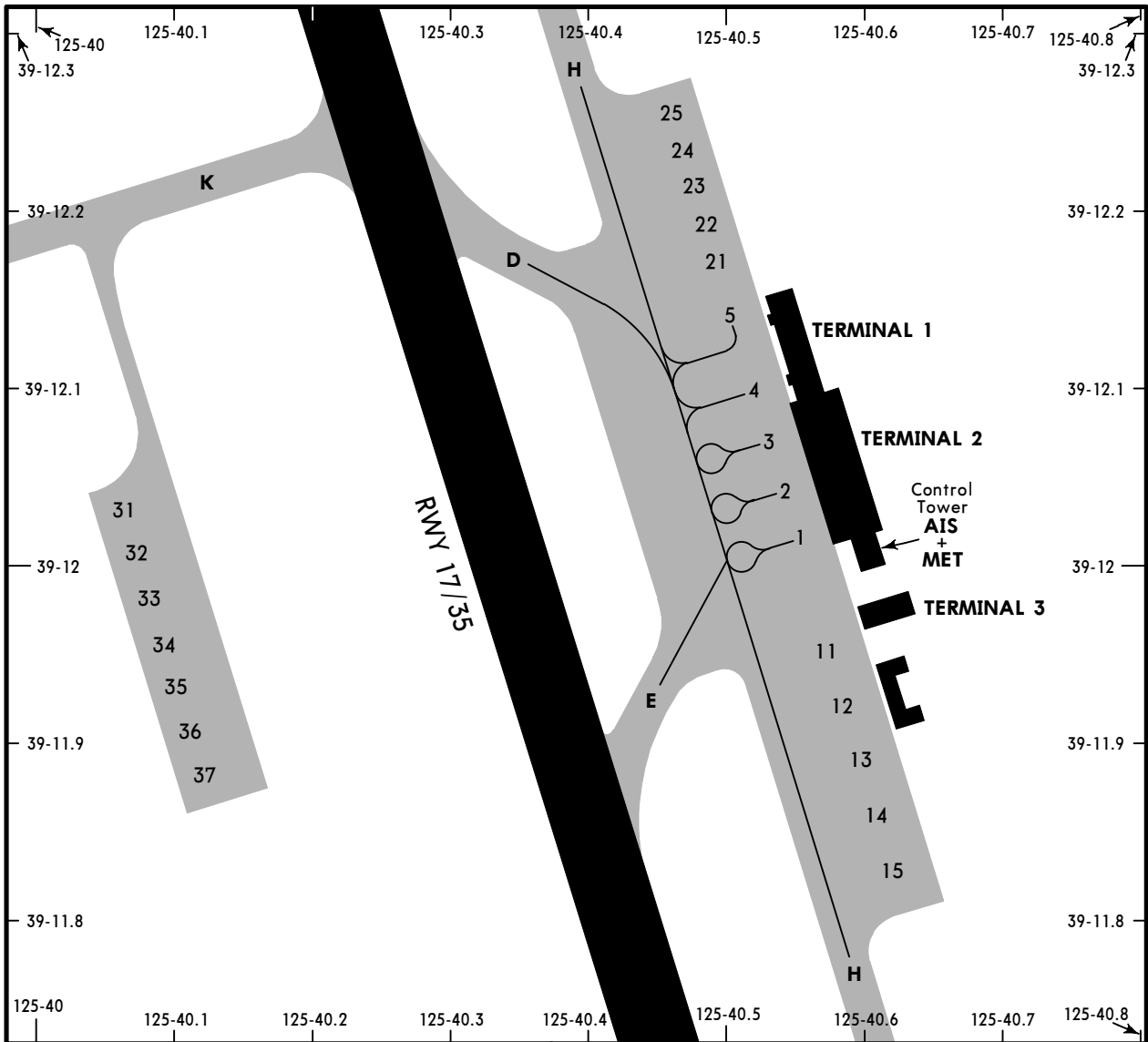
	RL & CL	RCLM (DAY only) or RL	RCLM (DAY only) or RL
A			
B	200m	250m	400m
C			
D	250m	300m	

ZKPY/FNJ

JEPPESEN PYONGYANG, DPR OF KOREA

27 JAN 23 10-9A

SUNAN



INS COORDINATES

STAND No.	COORDINATES
1	N39 12.0 E125 40.6
2	N39 12.0 E125 40.5
3 thru 5	N39 12.1 E125 40.5
11 thru 13	N39 11.9 E125 40.6
14, 15	N39 11.8 E125 40.6
21 thru 25	N39 12.2 E125 40.5
31 thru 33	N39 12.0 E125 40.1
34 thru 37	N39 11.9 E125 40.1

ZKPY/FNJ

JEPPESEN

Standard

23 AUG 19

10-9S

PYONGYANG, DPR OF KOREA
SUNAN

STRAIGHT-IN RWY		A	B	C	D
17	ILS FULL	289'(200') R550m ①	289'(200') R550m ①	289'(200') R550m ①	289'(200') R550m ①
	ALS out	R1200m	R1200m	R1200m	R1200m
	LOC ②	690'(601') R1500m	690'(601') R1500m	690'(601') R2100m	690'(601') R2100m
	ALS out	R1500m	R1500m	R2400m	R2400m
RNP (LNAV/VNAV)		640'(551') R1500m	640'(551') R1500m	640'(551') R1800m	640'(551') R1800m
	ALS out	R1500m	R1500m	R2400m	R2400m
	RNP (LNAV) ②	690'(601') R1500m	690'(601') R1500m	690'(601') R2100m	690'(601') R2100m
	ALS out	R1500m	R1500m	R2400m	R2400m
35	ILS FULL	299'(220') R800m	309'(230') R800m	319'(240') R800m	329'(250') R800m
	ALS out	R1200m	R1200m	R1200m	R1300m
	LOC ②	610'(531') R1500m	610'(531') R1500m	610'(531') R2000m	610'(531') R2000m
	ALS out	R1500m	R1500m	R2400m	R2400m
RNP (LNAV/VNAV)		580'(501') R1500m	580'(501') R1500m	580'(501') R1900m	580'(501') R1900m
	ALS out	R1500m	R1500m	R2400m	R2400m
	RNP (LNAV) ②	640'(561') R1500m	640'(561') R1500m	640'(561') R2200m	640'(561') R2200m
	ALS out	R1500m	R1500m	R2400m	R2400m

① RVR 750m when a Flight Director or Autopilot or HUD to DA is not used.

② Continuous Descent Final Approach.

CIRCLE-TO-LAND ③	100 KT	135 KT	180 KT	205 KT
After ILS & LOC	1380' (1291')	1380' (1291')	1380' (1291')	1380' (1291')
After RNP	970' (881') V1500m	970' (881') V1600m	970' (881') V2400m	970' (881') V3600m

③ Not authorised East of rwy.

TAKE-OFF

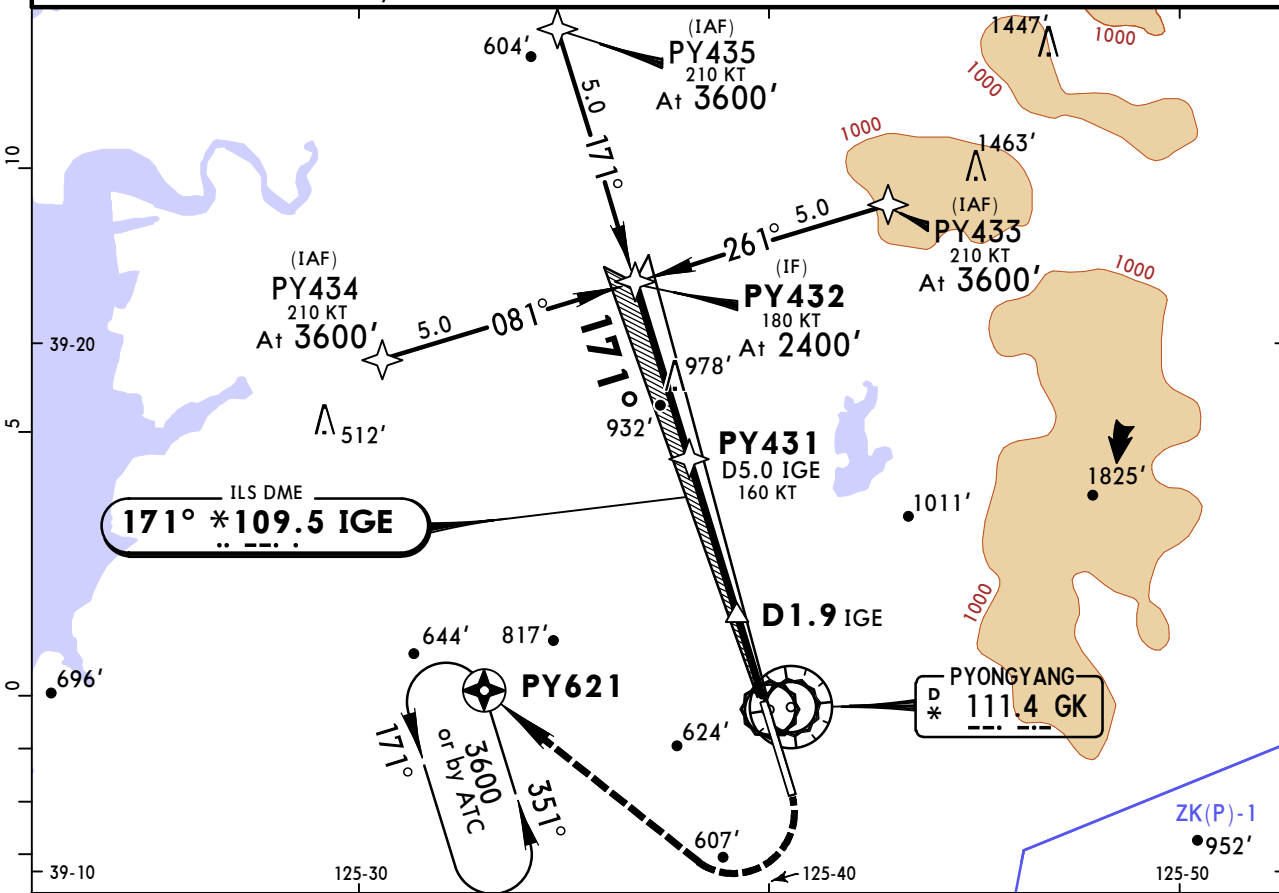
	Low Visibility Take-off				
	RL, CL & relevant RVR	RL & CL	Day: RL & RCLM Night: RL or CL	Day: RL or RCLM Night: RL or CL	Adequate vis ref (Day only)
A					
B	TDZ, MID, RO				
C	R150m	R200m	R300m	400m	500m
D					

ZKPY/FNJ
SUNAN

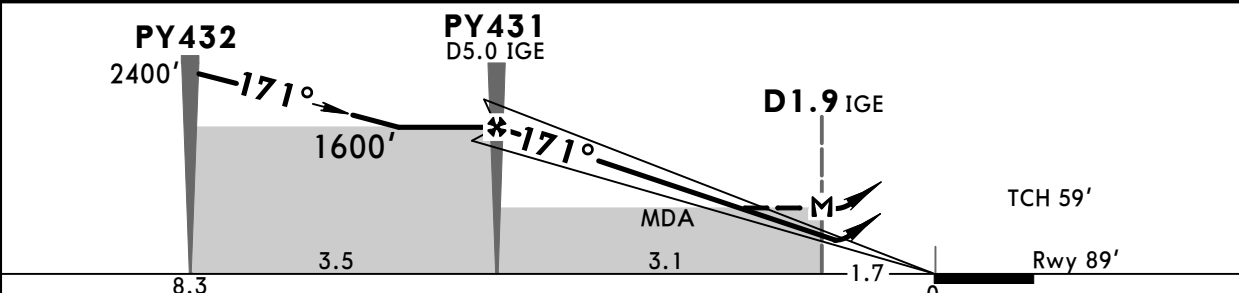
JEPPESSEN PYONGYANG, DPR OF KOREA
14 AUG 15 (11-1) Eff 20 Aug
ILS DME Rwy 17

PYONGYANG Approach 133.90			PYONGYANG Tower 118.30		
LOC IGE *109.5	Final Apch Crs 171°	GS PY431 1600' (1511')	ILS DA(H) 289' (200')	Apt Elev 89' Rwy 89'	
MISSED APCH: Climb on 171° to 770', then turn RIGHT direct to PY621, climbing to 3600', or as directed.					

Alt Set: hPa Rwy Elev: 3 hPa Trans level: FL 130 Trans alt: 12000'



LOC (GS out)	IGE DME	8.0	7.0	6.0	5.0	4.0	3.0	2.0	1.0	0.0
	ALTITUDE	2640'	2320'	2000'	1690'	1370'	1050'	730'	410'	150'



Gnd speed-Kts	70	90	100	120	140	160		770' ↑	PY621 RT	at 3600'	
ILS GS or LOC Descent Angle	3.00°	372	478	531	637	743					849
MAP at D1.9 IGE											

STRAIGHT-IN LANDING RWY 17				CIRCLE-TO-LAND Not authorised East of rwy	
ILS DA(H) 289' (200')		LOC (GS out) MDA(H) 690' (601')		Max Kts	MDA(H)
FULL	ALS out	ALS out	ALS out		
A				100	1380' (1291') 2000m I
B				135	1380' (1291') 2400m I
C	800m	1200m		180	1380' (1291') 4800m
D				205	

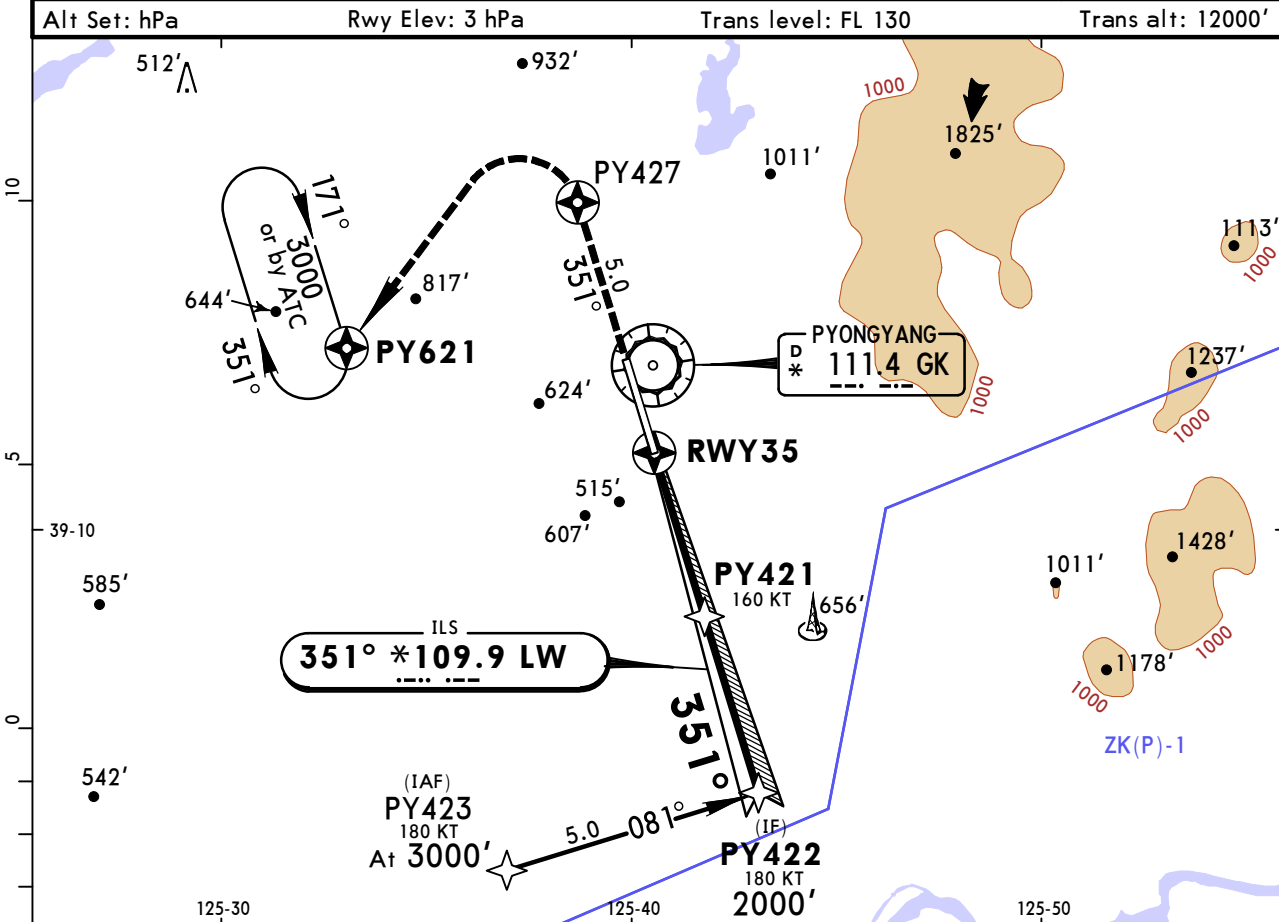
PANS OPS

I After LOC (GS out) apch: VIS 3100m.

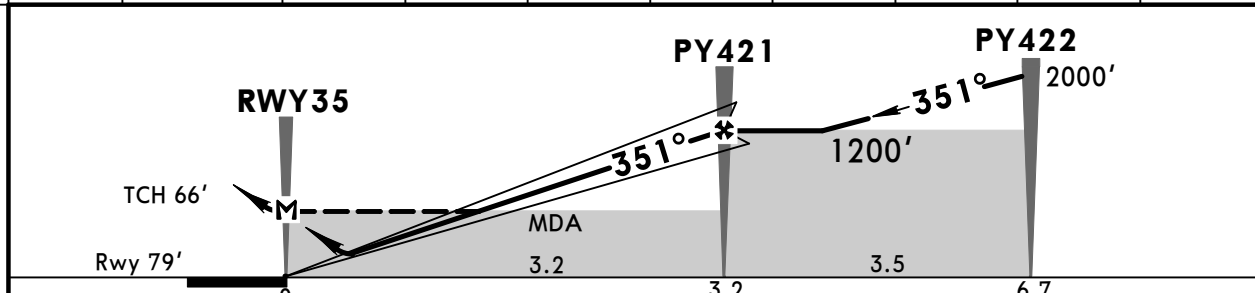
ZKPY/FNJ
SUNAN

JEPPESSEN PYONGYANG, DPR OF KOREA
14 AUG 15 (11-2) **Eff 20 Aug** ILS Rwy 35

PYONGYANG Approach			PYONGYANG Tower		
133.90			118.30		
LOC LW *109.9	Final Apch Crs 351°	GS PY421 1200' (1121')	ILS DA(H) Refer to Minimums	Apt Elev 89' Rwy 79'	
MISSED APCH: Climb to PY427, then turn LEFT direct to PY621 at 3000', or as directed.					
Alt Set: hPa		Rwy Elev: 3 hPa		Trans level: FL 130	



LOC (GS out)	DIST to RWY35	0.0	1.0	2.0	3.0	4.0	5.0	6.0	7.0
	ALTITUDE	150'	470'	790'	1110'	1430'	1740'	2060'	2380'



Gnd speed-Kts	70	90	100	120	140	160	HIALS PAPI	PY427 ↑	PY621 ← LT	at 3000'
ILS GS or LOC Descent Angle	3.00°	372	478	531	637	849				
MAP at RWY35										

ILS STRAIGHT-IN LANDING RWY 35 DA(H) A: 299' (220') C: 319' (240') B: 309' (230') D: 329' (250') FULL ALS out						LOC (GS out) MDA(H) 610' (531') ALS out		CIRCLE-TO-LAND Not authorised East of rwy MDA(H)	
A	1200m		1200m	1600m	100	1380' (1291')	2000m		
B	1200m		1200m	1600m	135	1380' (1291')	2400m		
C	1200m				180	1380' (1291') 4800m			
D	1200m				205	1380' (1291') 4800m			

CHANGES: None.

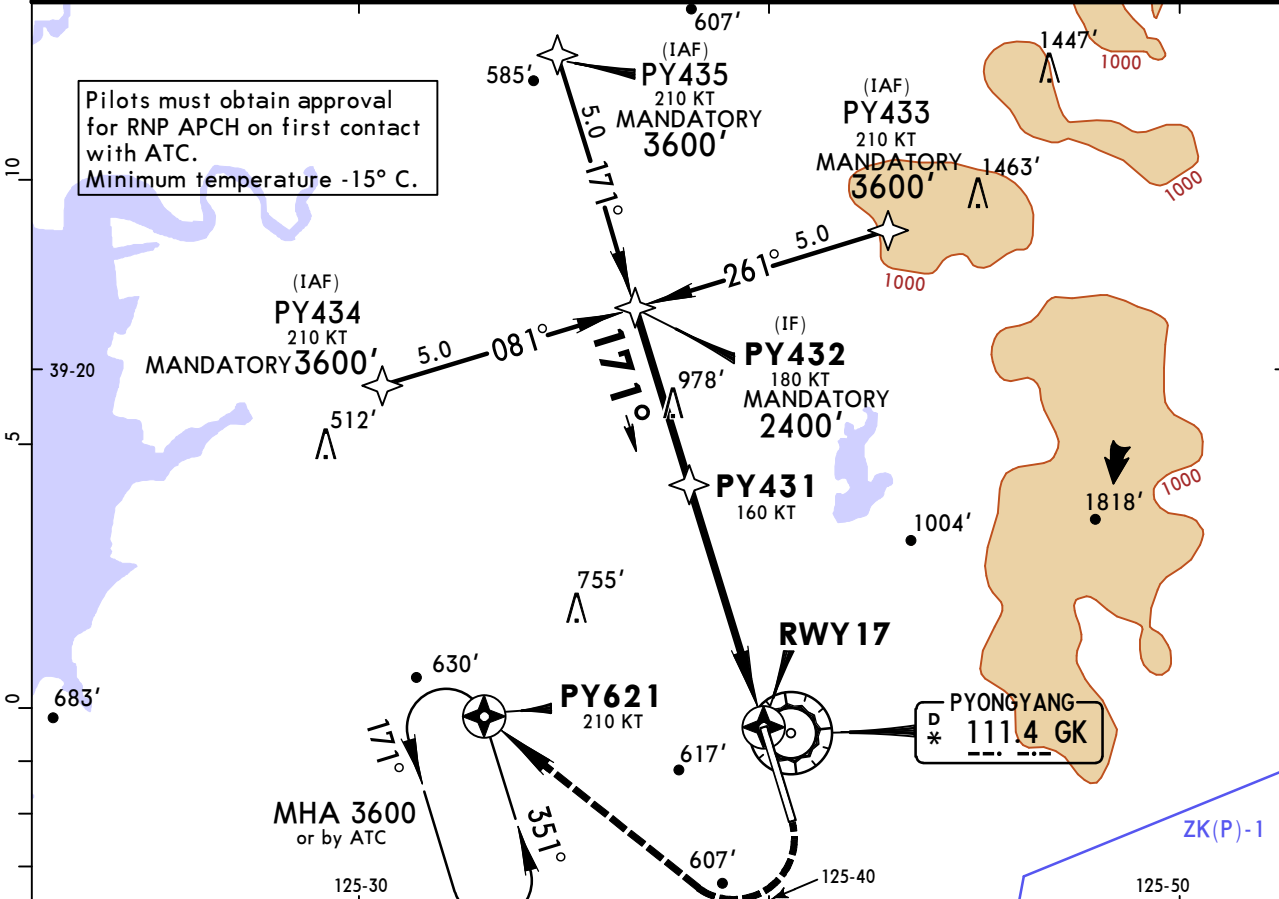
© JEPPESSEN, 2015. ALL RIGHTS RESERVED.

ZKPY/FNJ
SUNAN

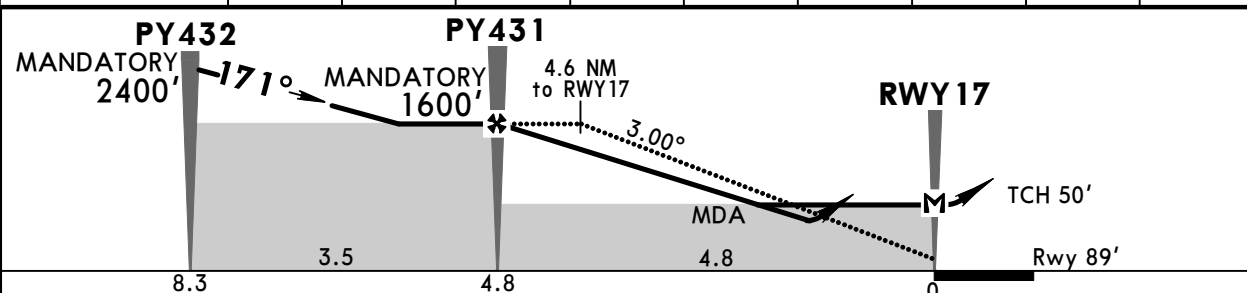
JEPPESEN PYONGYANG, DPR OF KOREA
23 AUG 19 (12-1)
RNP Rwy 17

PYONGYANG Approach			PYONGYANG Tower		
133.90			118.30		
RNAV	Final Apch Crs 171°	Mandatory Alt PY431 1600' (1511')	LNAV/VNAV DA(H) 640' (551')	Apt Elev 89' Rwy 89'	
MISSED APCH: Turn RIGHT direct to PY621 climbing to 3600', or as directed. MAX 185 KT.					MSA GK VOR

Alt Set: hPa Rwy Elev: 3 hPa Trans level: FL 130 Trans alt: 12000'



DIST to RWY17	8.0	7.0	6.0	5.0	4.0	3.0	2.0	1.0	0.0
ALTITUDE	2690'	2370'	2050'	1730'	1420'	1100'	780'	460'	140'



Gnd speed-Kts	70	90	100	120	140	160	HIALS PAPI	185 KT MAX	PY621 at 3600' RT
Descent Angle	3.00°	372	478	531	637	849			
MAP at RWY17									

STRAIGHT-IN LANDING RWY 17					CIRCLE-TO-LAND Not authorised East of rwy	
LNAV/VNAV DA(H) 640' (551')		LNAV MDA(H) 690' (601')		Max Kts.	MDA(H)	
	ALS out		ALS out			
A	800m	1600m	800m	100	970' (881')	2000m
B				135		
C	1600m	2400m	2000m	180	970' (881')	4400m
D	2000m	2800m	2400m	205	970' (881')	4800m

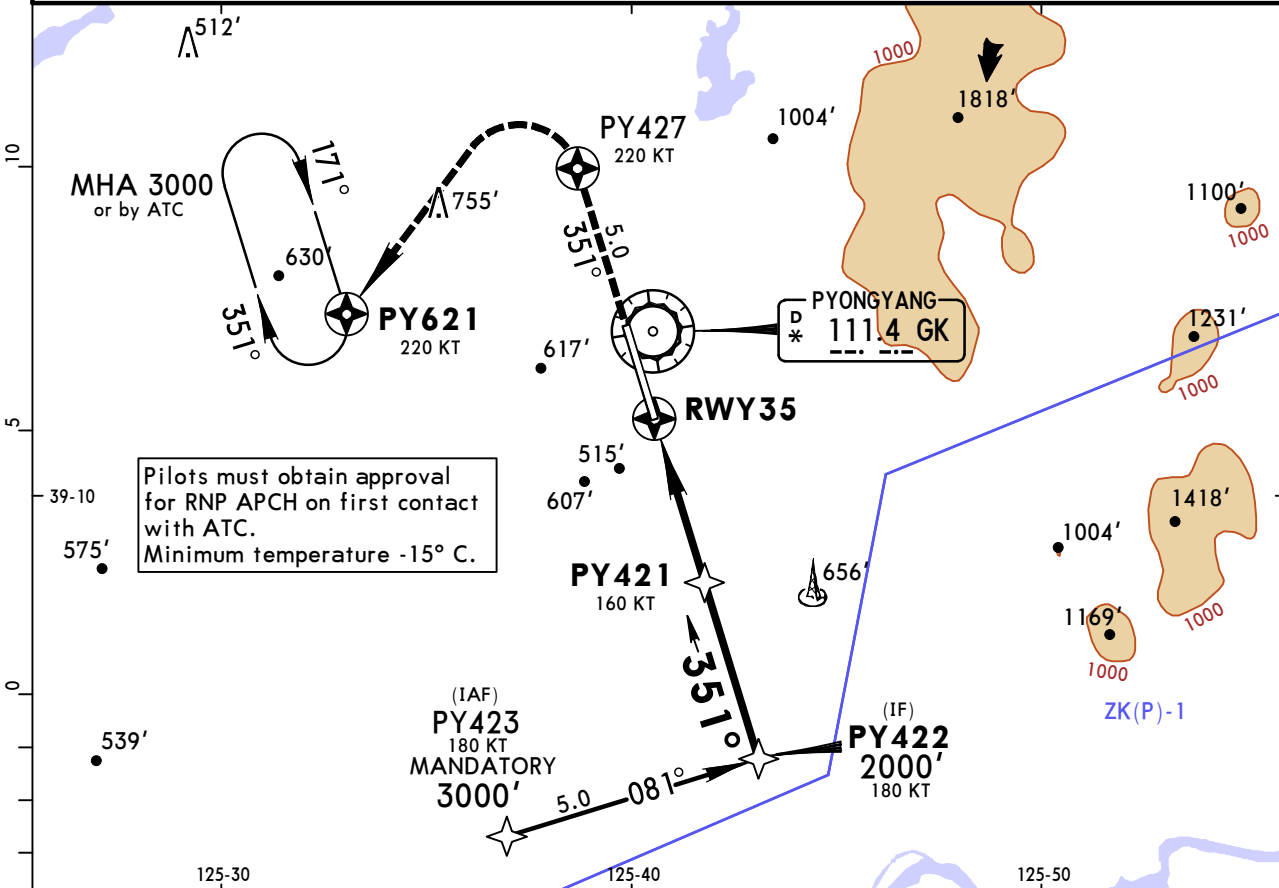
ZKPY/FNJ
SUNAN

JEPPESSEN PYONGYANG, DPR OF KOREA
RNP Rwy 35

23 AUG 19 (12-2)

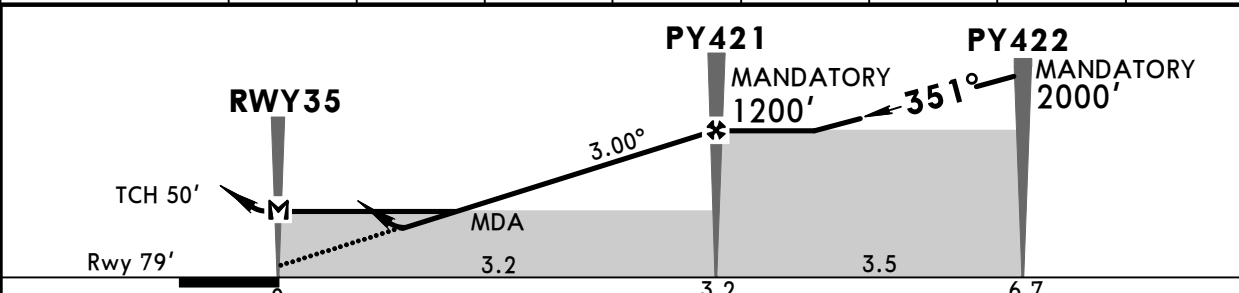
PYONGYANG Approach			PYONGYANG Tower		
133.90			118.30		
RNAV	Final Apch Crs 351°	Mandatory Alt PY421 1200' (1121')	LNAV/VNAV DA(H) 580' (501')	Apt Elev 89' Rwy 79'	
MISSED APCH: Climb to PY427, then turn LEFT direct to PY621 at 3000', or as directed. MAX 185 KT.					MSA GK VOR

Alt Set: hPa Rwy Elev: 3 hPa Trans level: FL 130 Trans alt: 12000'



Pilots must obtain approval for RNP APCH on first contact with ATC.
Minimum temperature -15° C.

DIST to RWY35	0.0	1.0	2.0	3.0	4.0	5.0	6.0	7.0
ALTITUDE	130'	450'	770'	1090'	1410'	1720'	2040'	2360'



Gnd speed-Kts	70	90	100	120	140	160	HIALS PAPI 185 KT MAX	PY427	PY621	at 3000'
Descent Angle	3.00°	372	478	531	637	849				
MAP at RWY35										

STRAIGHT-IN LANDING RWY 35				CIRCLE-TO-LAND Not authorised East of rwy		
LNAV/VNAV DA(H) 580' (501')		LNAV MDA(H) 640' (561')				
ALS out		ALS out		Max Kts	MDA(H)	
A	1200m	1600m	1200m			1600m
B					135	970'(881') 2000m
C			2400m		180	970'(881') 4400m
D			2800m		205	970'(881') 4800m

PANS OPS

Chart changes since cycle 10-2024

ADD = added chart, REV = revised chart, DEL = deleted chart.

ACT	PROCEDURE IDENT	INDEX	REV DATE	EFF DATE
-----	-----------------	-------	----------	----------

PYONGYANG, (SUNAN - ZKPY)

TERMINAL CHART CHANGE NOTICES

No Chart Change Notices for Airport ZKPY